

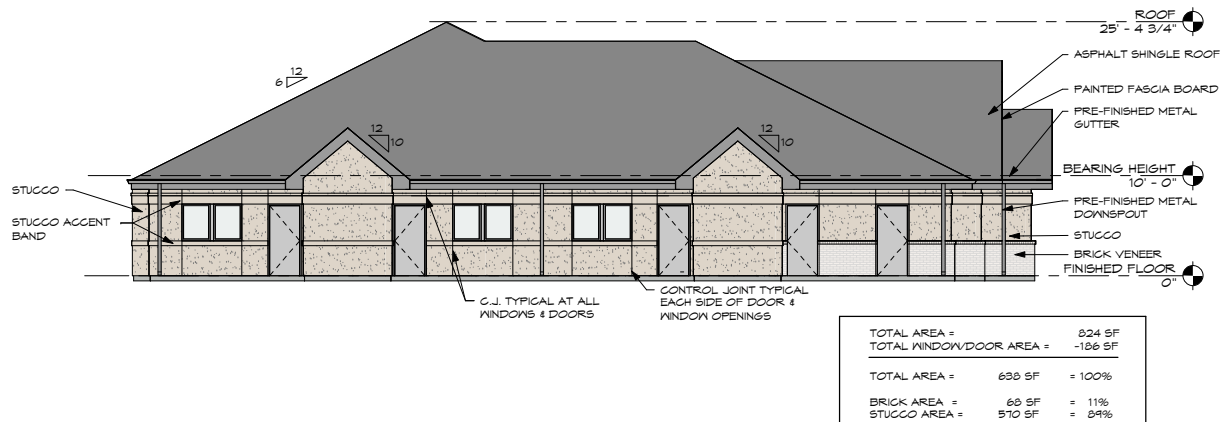
5 - NORTH ELEVATION

1/8" = 1'-0"



4 - EAST ELEVATION

1/8" = 1'-0"



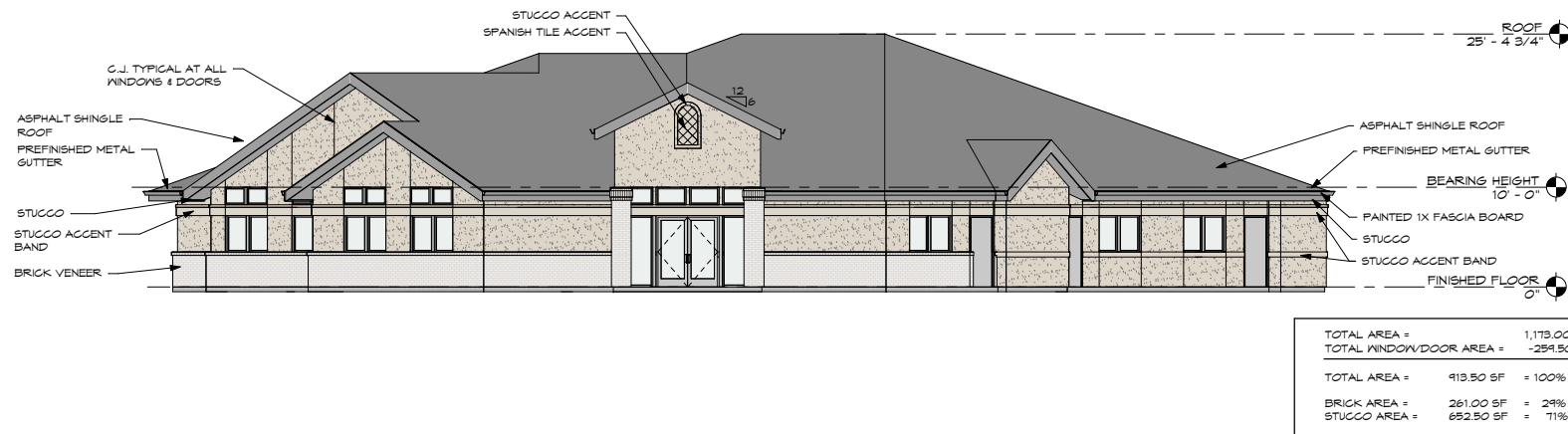
3 - WEST ELEVATION

1/8" = 1'-0"



2 - SOUTH ELEVATION

1/8" = 1'-0"



1 - SOUTHEAST ELEVATION

1/8" = 1'-0"

MATERIAL SCHEDULE

STUCCO	SHERWIN WILLIAMS SW9111 ANTLER VELVET OR APPROVED EQUAL
ASPHALT SHINGLE ROOF	CERTANTEED, LANDMARK DESIGNER SHINGLES MAX DEF WEATHERED WOOD OR APPROVED EQUAL
FENCE	STAINED WOOD
BRICK	ACME KING SIZE GLACIER WHITE VELOUR TEXTURE OR APPROVED EQUAL

901 N. McDonald St.
Suite 203
McKinney, Texas 75069
972.529.9790

rawis·culver
ARCHITECTS, PLLC

A NEW PROJECT FOR
SPANISH SCHOOL HOUSE
1213 NORTH ALMA DRIVE, ALLEN, TEXAS 75013

"ISSUED FOR REGULATORY REVIEW, PERMITTING AND CONSTRUCTION JULY 1, 2019

Job No: 19007



Date: JANUARY 14, 2020
Revision:

Sheet Title:
EXTERIOR
ELEVATIONS

Drawn By: SGP
Sheet Number:

A3.1