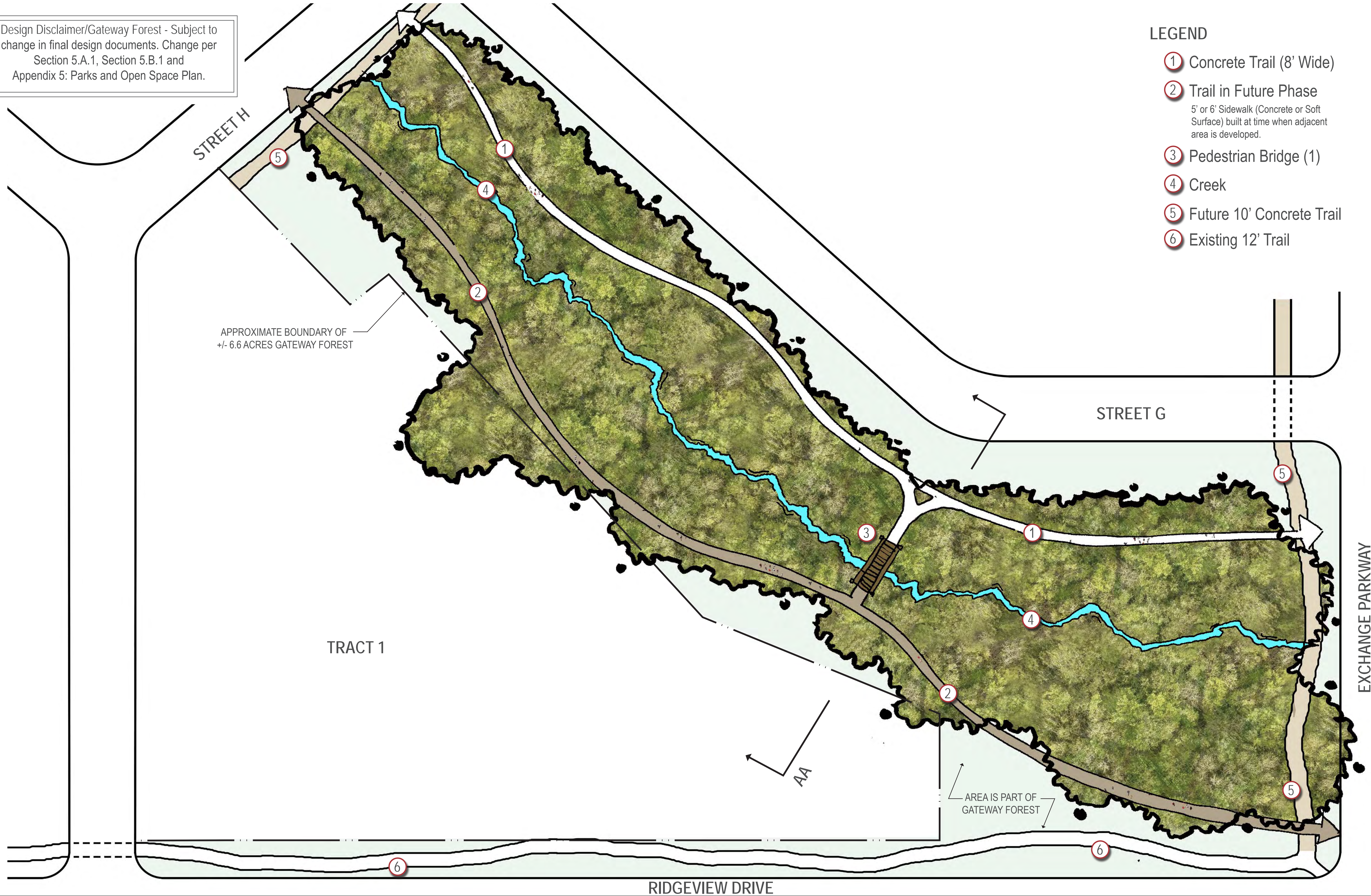


Design Disclaimer/Gateway Forest - Subject to change in final design documents. Change per Section 5.A.1, Section 5.B.1 and Appendix 5: Parks and Open Space Plan.

- LEGEND
- ① Concrete Trail (8' Wide)
 - ② Trail in Future Phase
5' or 6' Sidewalk (Concrete or Soft Surface) built at time when adjacent area is developed.
 - ③ Pedestrian Bridge (1)
 - ④ Creek
 - ⑤ Future 10' Concrete Trail
 - ⑥ Existing 12' Trail



GATEWAY ALLEN | GATEWAY FOREST CONCEPTUAL PLAN

01 JANUARY 2020



Design Disclaimer/Gateway Forest - Subject to change in final design documents. Change per Section 5.A.1, Section 5.B.1 and Appendix 5: Parks and Open Space Plan.

- LEGEND
- ①

Multi Family Housing

②

Native Vegetation

③

Future Bench

④

Future Pathway Lighting

⑤

Future Soft Surface/
Concrete Trail

⑥

No Site Grading/
Protect Trees
- ⑦

Existing Creek

⑧

Pedestrian Bridge

⑨

Bench

⑩

Pathway Lighting

⑪

Concrete (8') Pathway

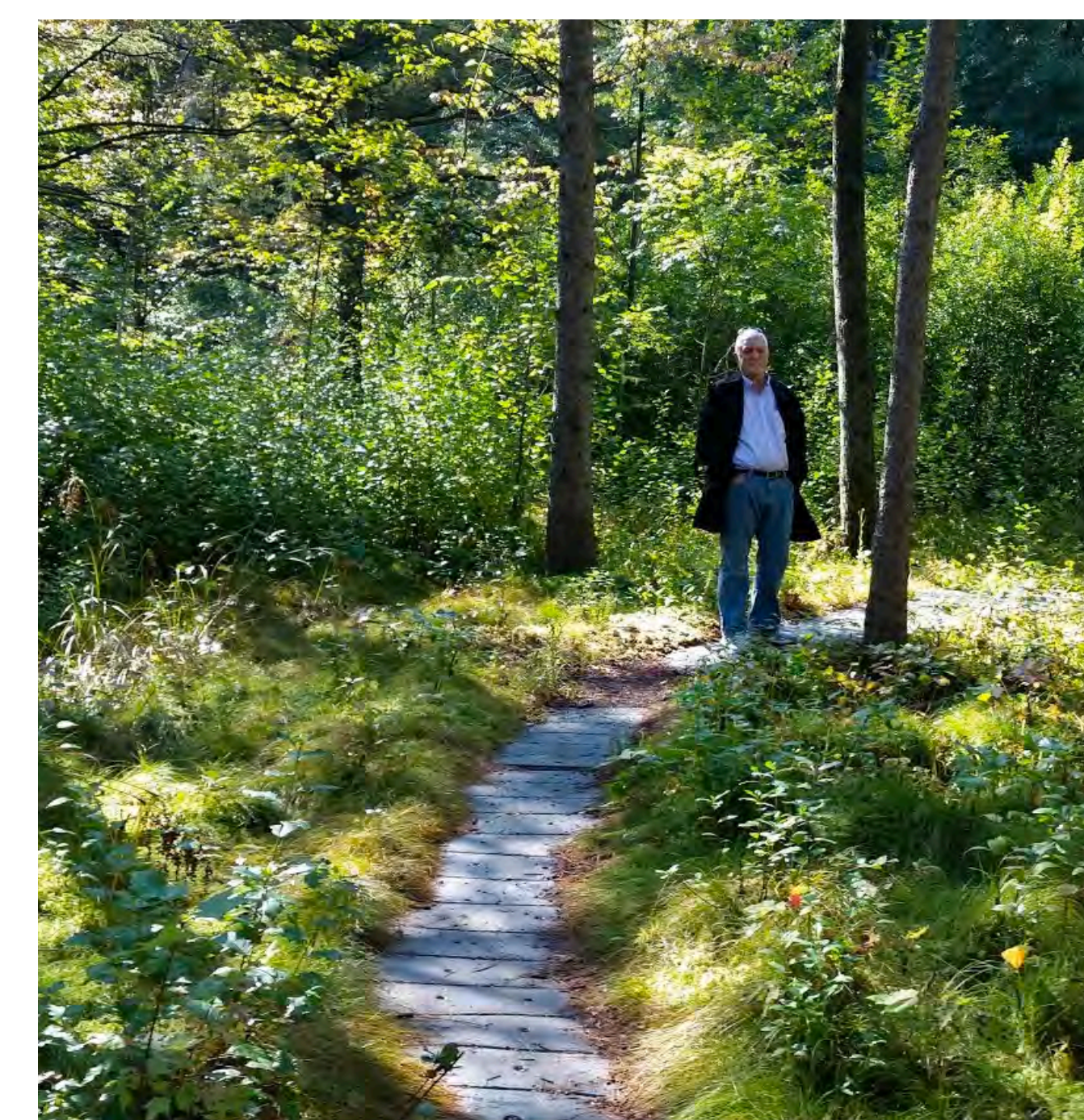
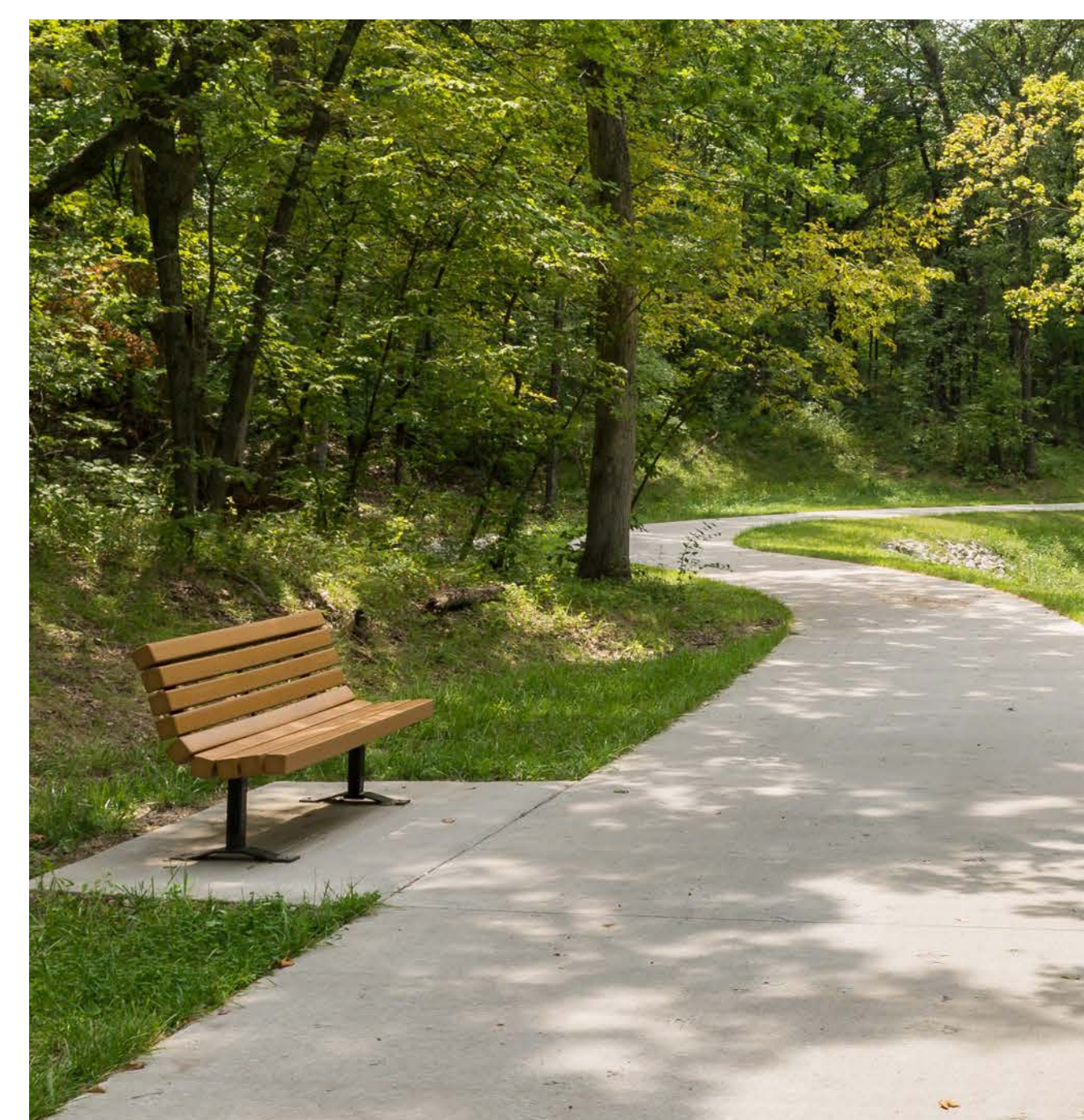
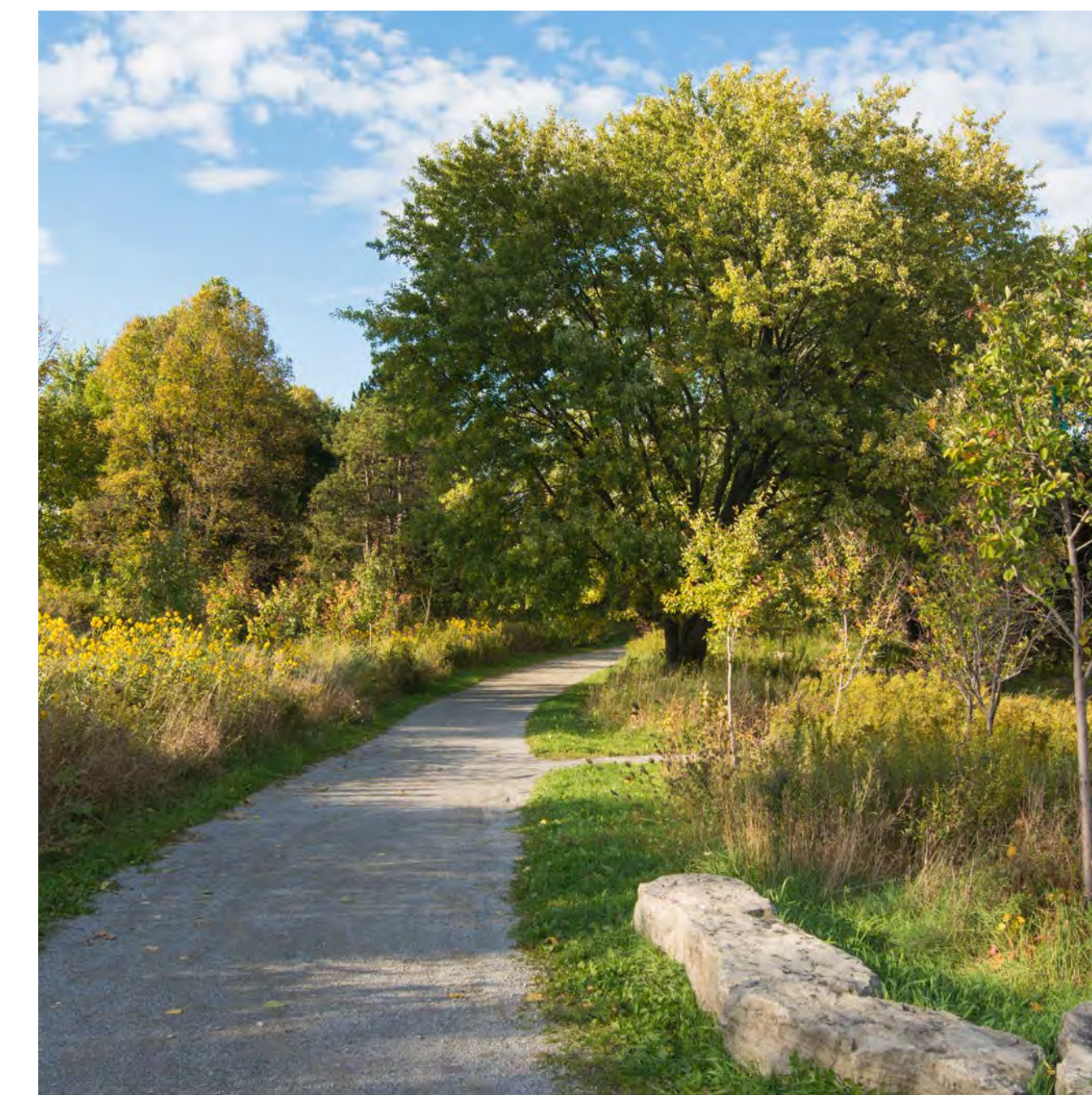
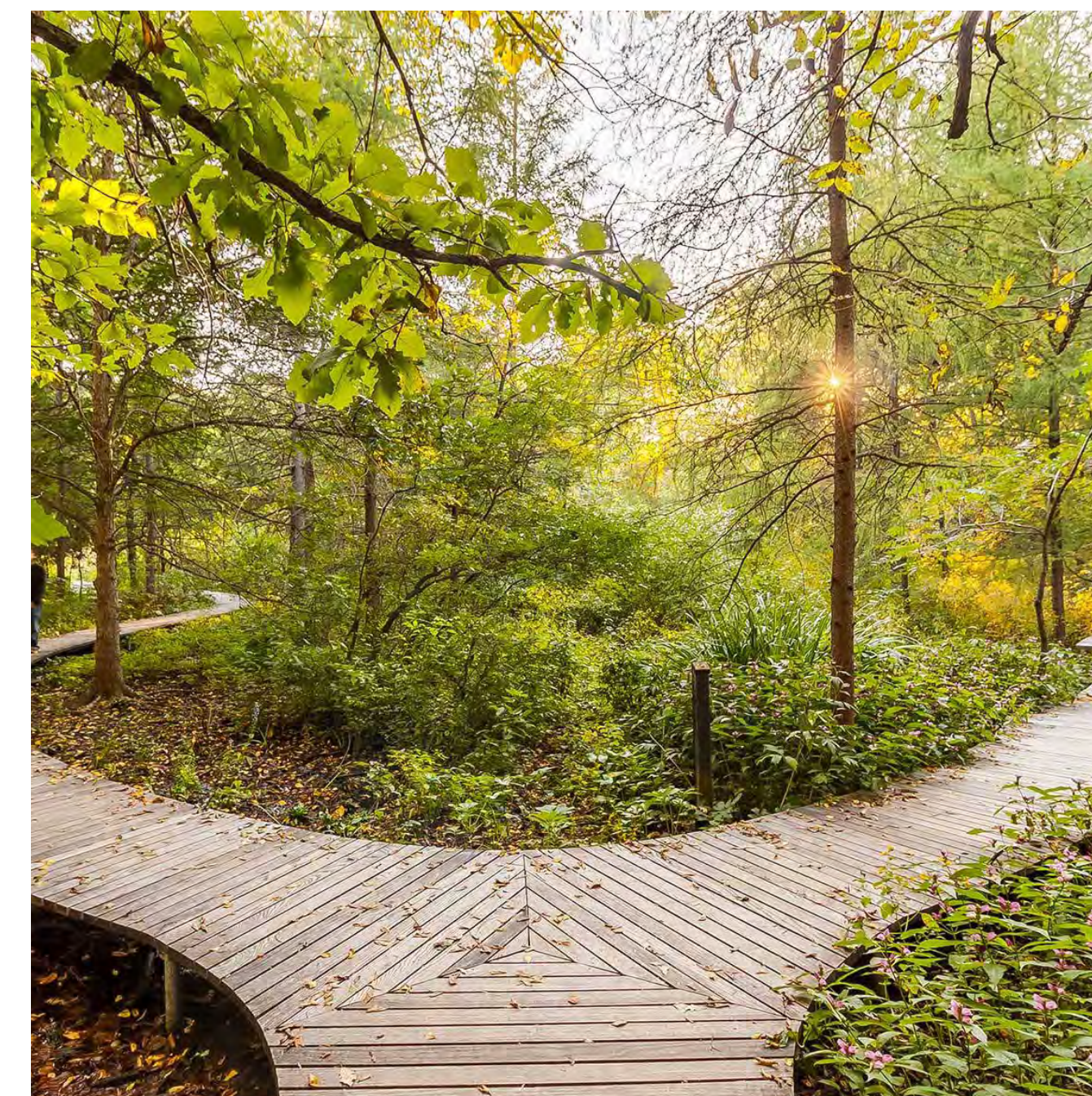
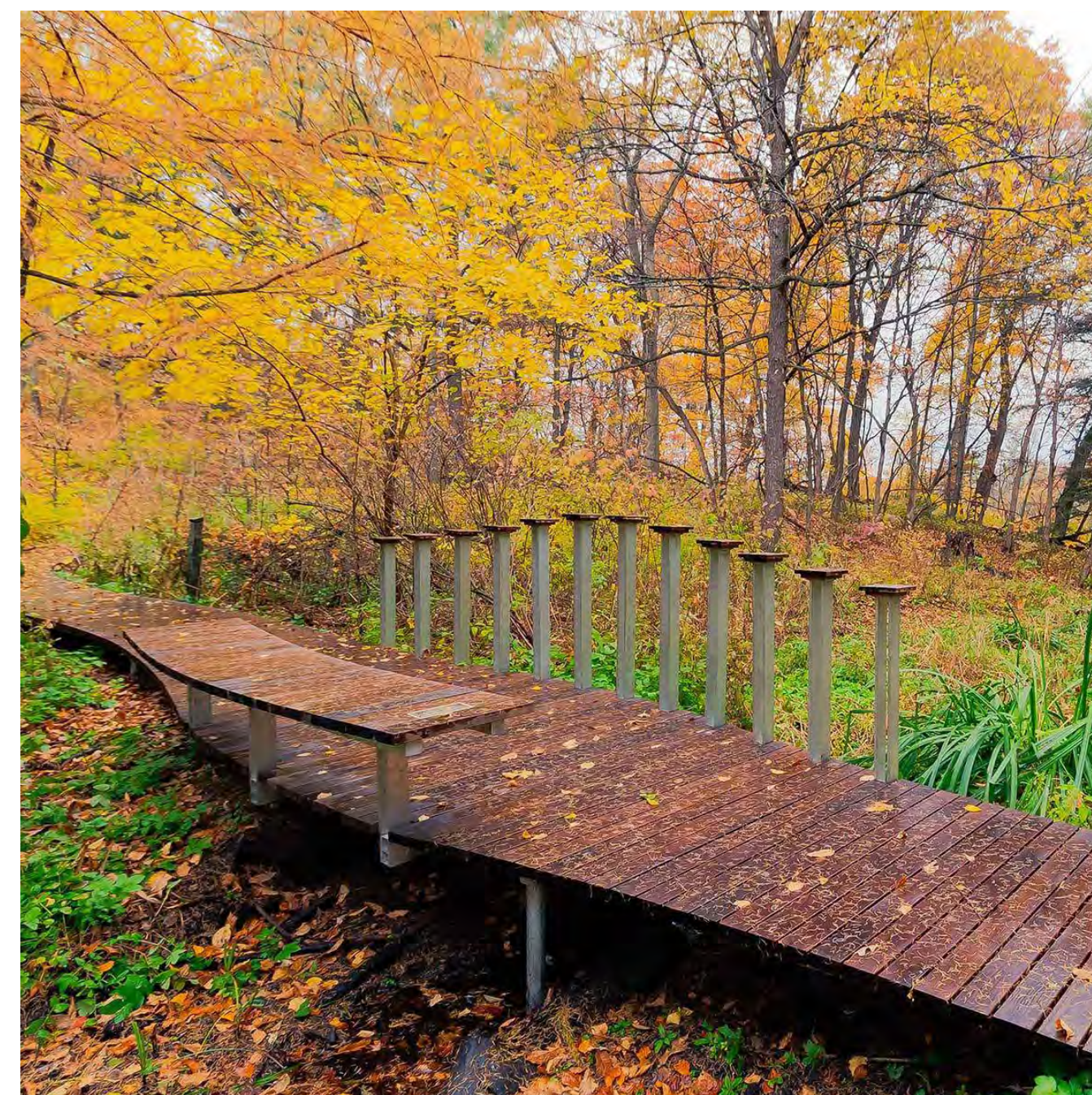
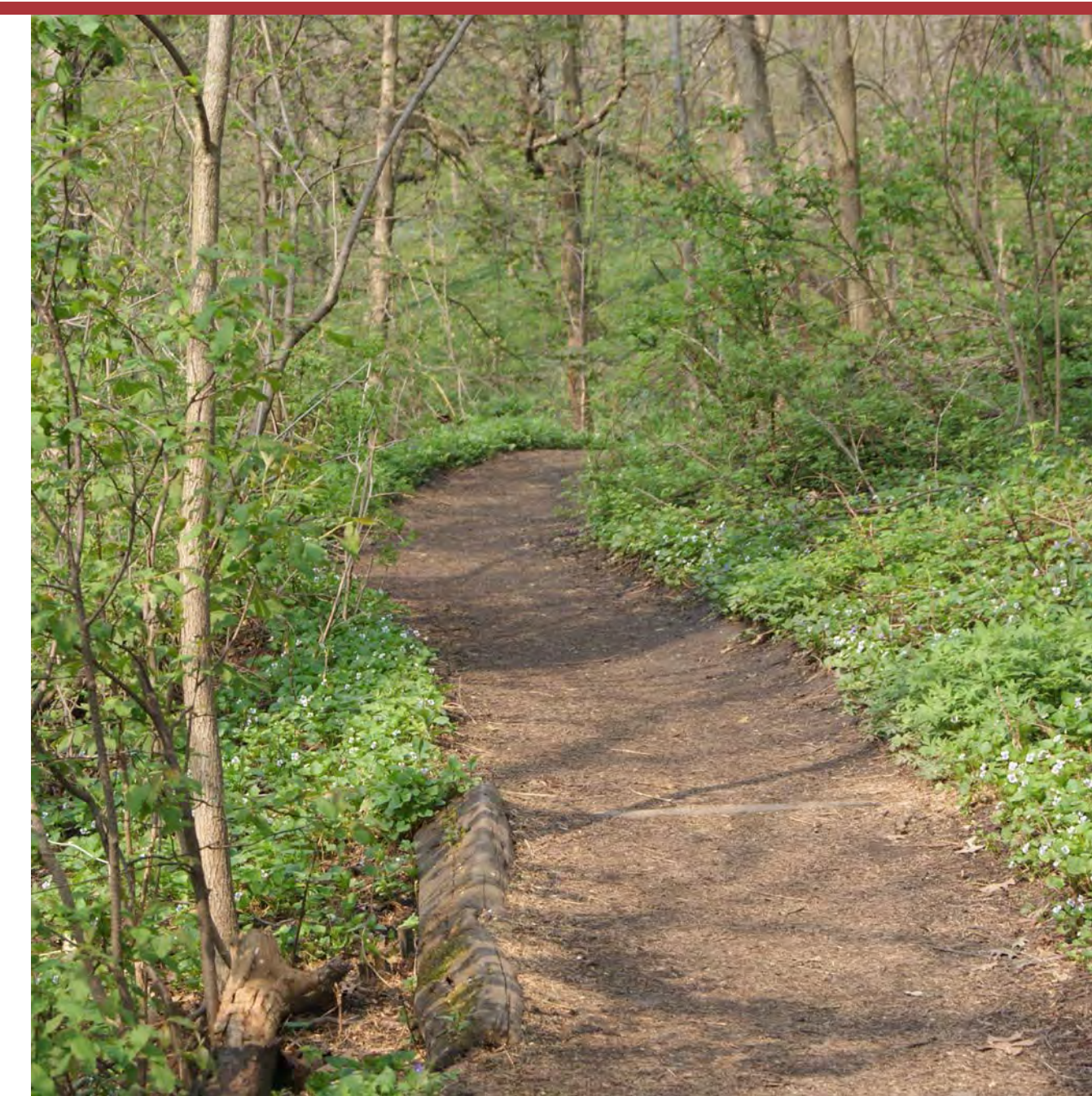
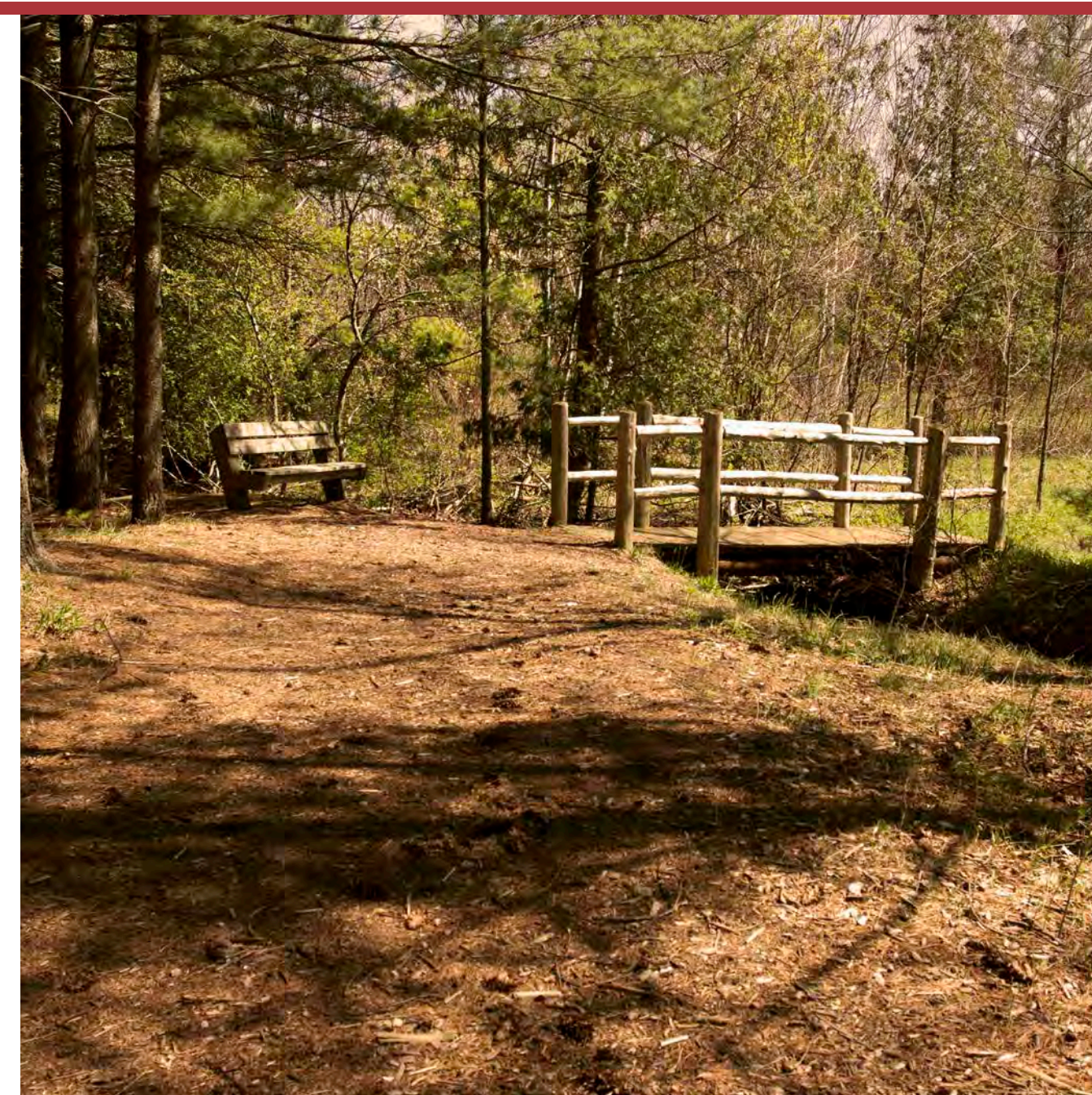
⑫

Street G

⑬

Street Trees





GATEWAY ALLEN | GATEWAY FOREST PROTOTYPICAL IMAGES

01 JANUARY 2020



Design Disclaimer/Central Square - Subject to change/redesign depending on inclusion of restaurant or removal of street(s) E and/or F.



LEGEND

- ① Stand Alone Restaurant
(Max. 2,000 SF)
- ② Stage/Shade Structure
- ③ Event/Leisure Lawn
- ④ Native Planting Bed
- ⑤ Outdoor Dining Area
Movable Tables/Chairs/Umbrellas
- ⑥ Pedestrian Plaza Trellis
- ⑦ Shade Structure
- ⑧ Fountain*
- ⑨ Pedestrian Resting Pod
- ⑩ Food Truck Parking
- ⑪ Parallel Parking Street
- ⑫ Trees

**Note: May also include a similarly valued pedestrian amenity in lieu of Fountain.*



NORTH

GATEWAY ALLEN | CENTRAL SQUARE CONCEPTUAL PLAN

01 JANUARY 2020



KLS
KLAPP
LANDSCAPE

NORRIS DESIGN
Planning | Landscape Architecture | Branding

Design Disclaimer/Central Square - Subject to change/redesign depending on inclusion of restaurant or removal of street(s) E and/or F.

LEGEND

- ①

Stand Alone Restaurant
(Max 2,000 SF)
- ②

Stage/Shade Structure
- ③

Event/Leisure Lawn
- ④

Native Planting Bed
- ⑤

Outdoor Dining Area
Movable Tables/Chairs/Umbrellas
- ⑥

Pedestrian Plaza
- ⑦

Trellis Shade Structure
- ⑧

Fountain*
- ⑨

Pedestrian Resting Pod
- ⑩

Food Truck Parking
- ⑪

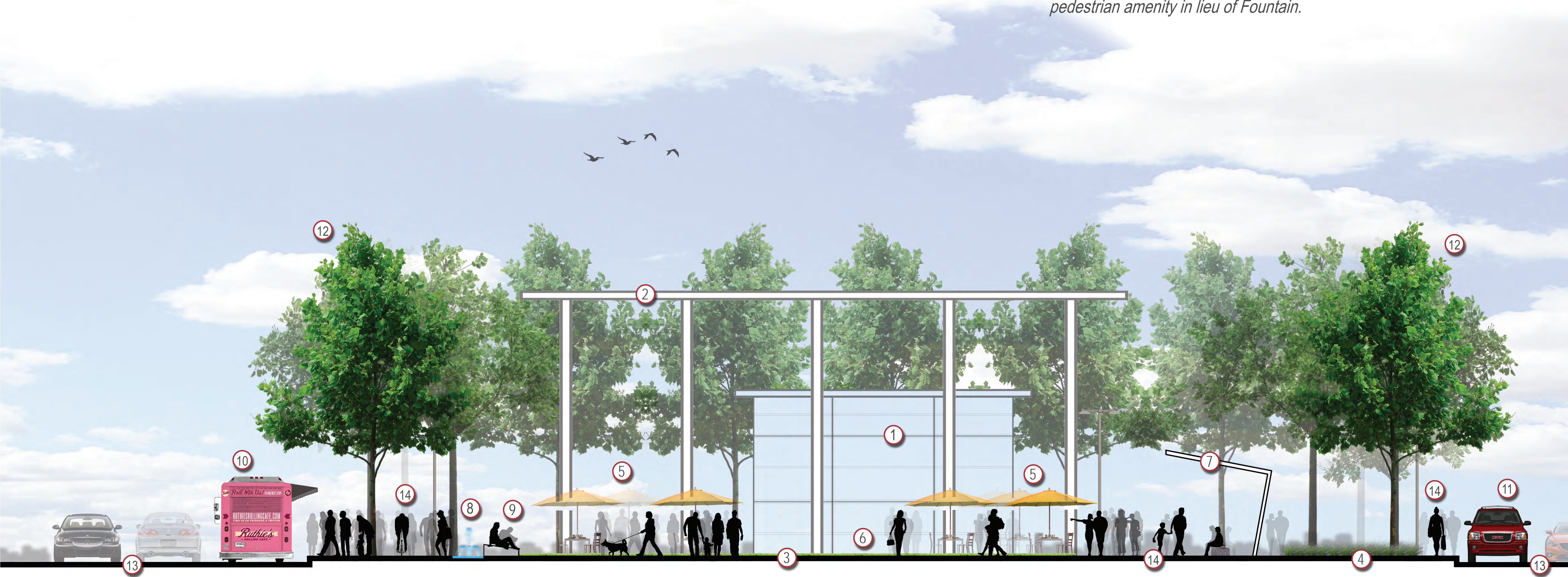
Parallel Parking
- ⑫

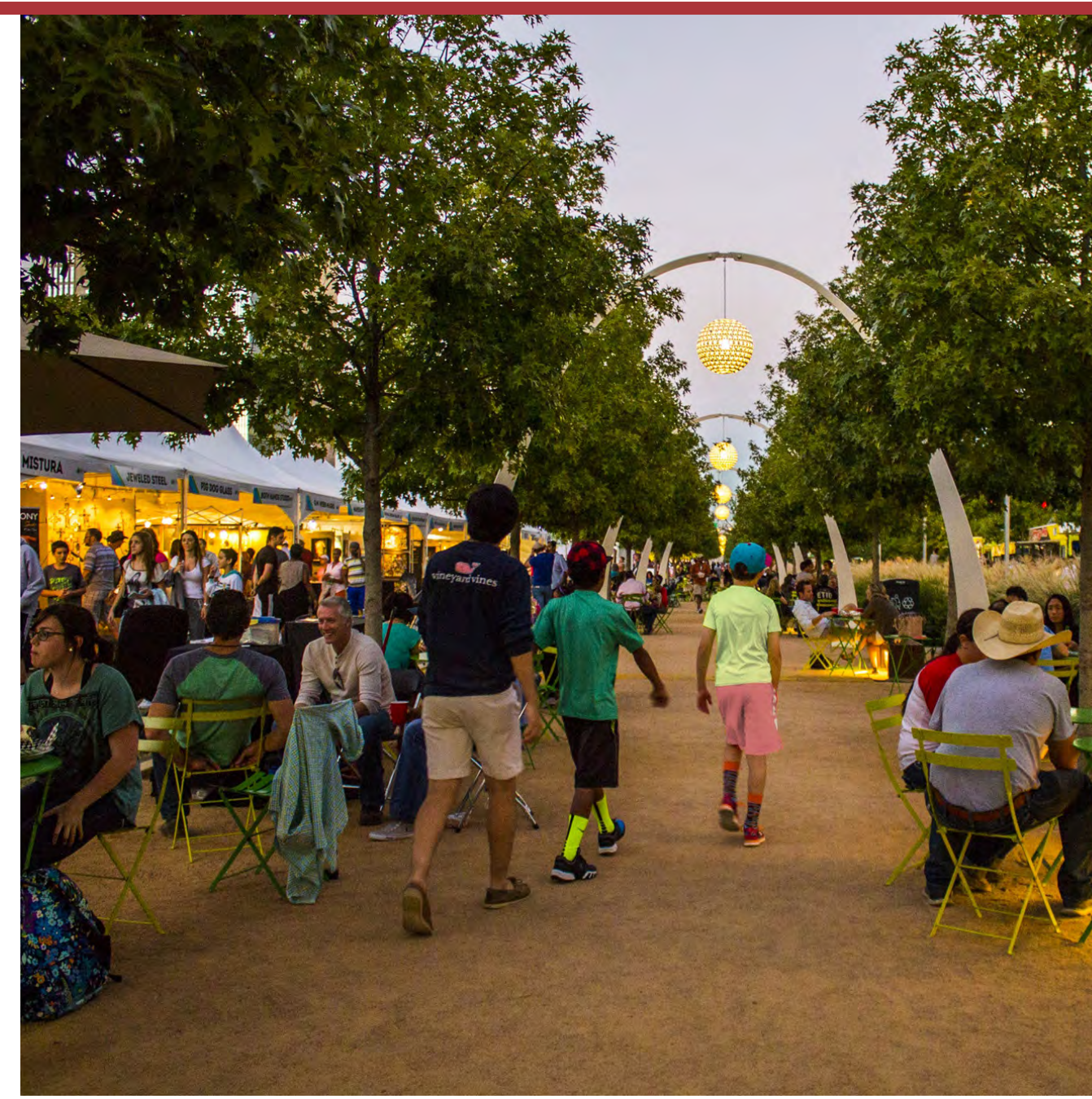
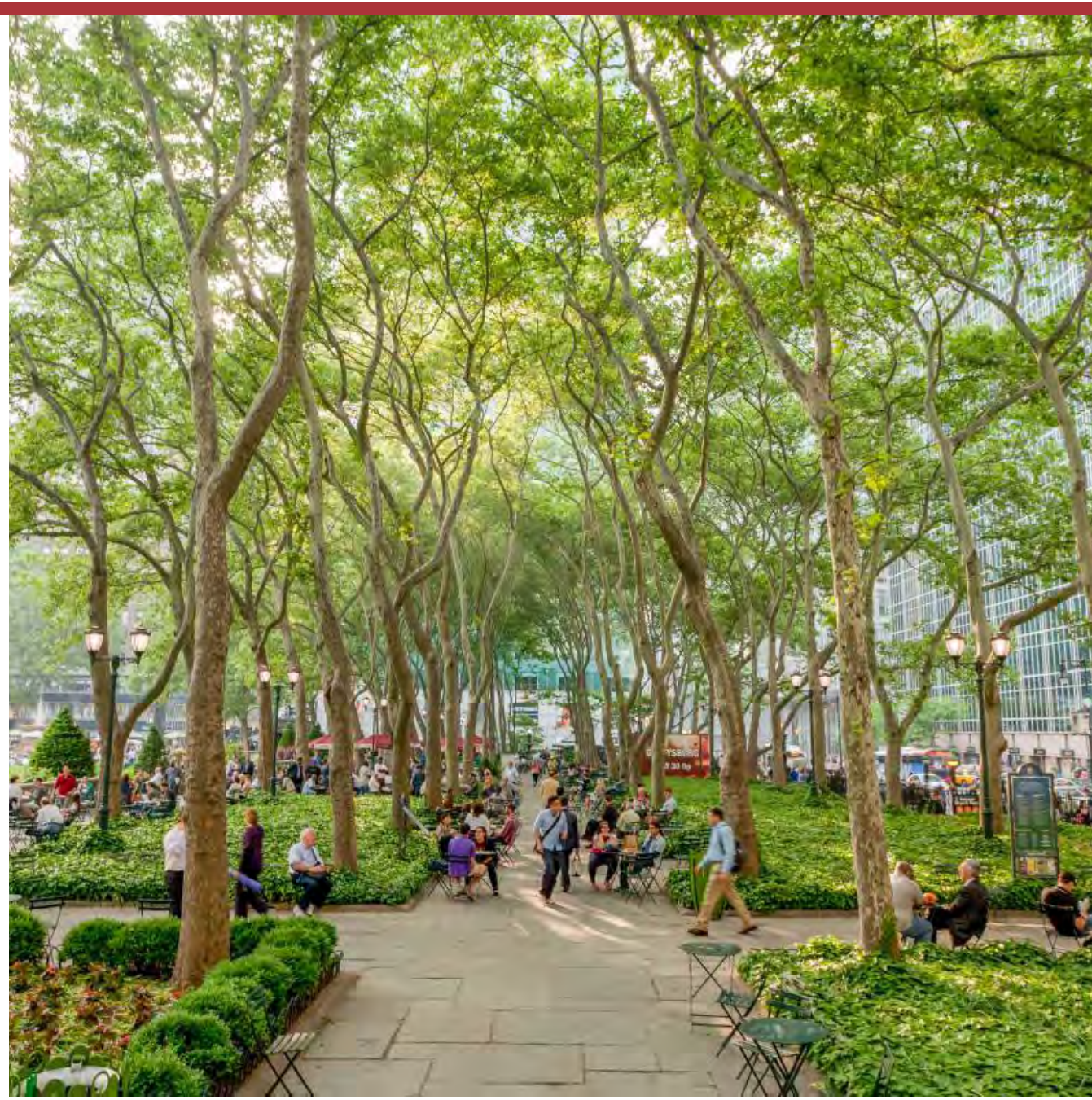
Street Trees
- ⑬

Street
- ⑭

Pedestrian Corridor/Pathway

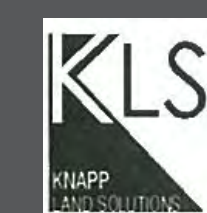
**Note: May also include a similarly valued pedestrian amenity in lieu of Fountain.*





GATEWAY ALLEN | CENTRAL SQUARE PROTOTYPICAL IMAGES

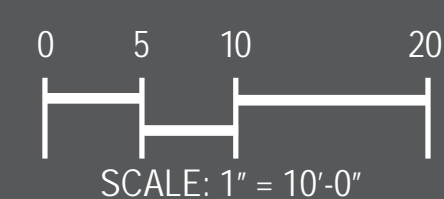
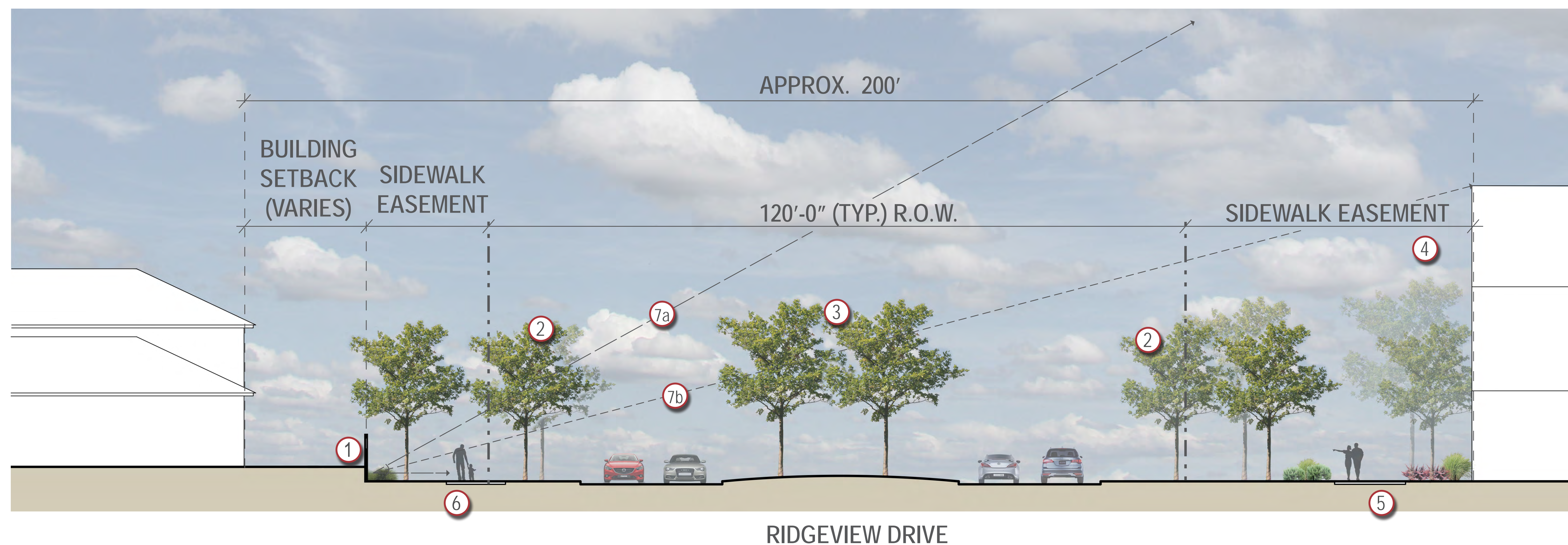
01 JANUARY 2020



NORRIS DESIGN
Planning | Landscape Architecture | Branding

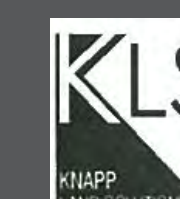
LEGEND

- ① Fence
- ② Street Trees
- ③ Median Trees
- ④ Landscape Buffer - Approx. 30'
- ⑤ Pedestrian Trail - North Side - 12'
- ⑥ Pedestrian Trail - South Side - 10'
- ⑦ Slope From Residential Property Line
 - ⑦a Normal 2:1 Slope
 - ⑦b Actual 3.7:1 Slope



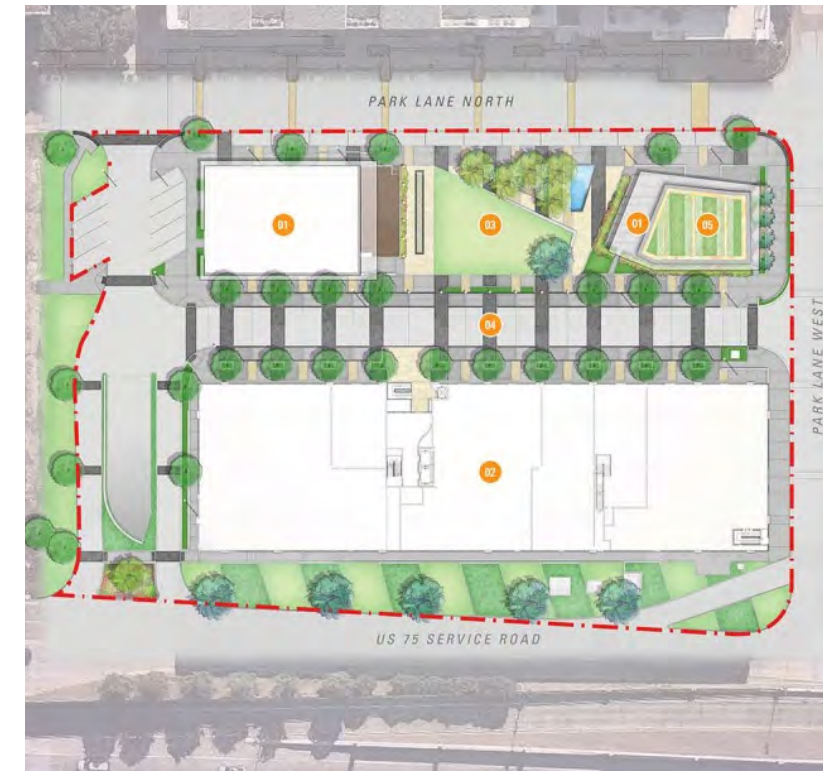
GATEWAY ALLEN | RIDGEVIEW DRIVE TYPICAL SECTION

01 JANUARY 2020





Mizner Park - Boca Raton, Florida



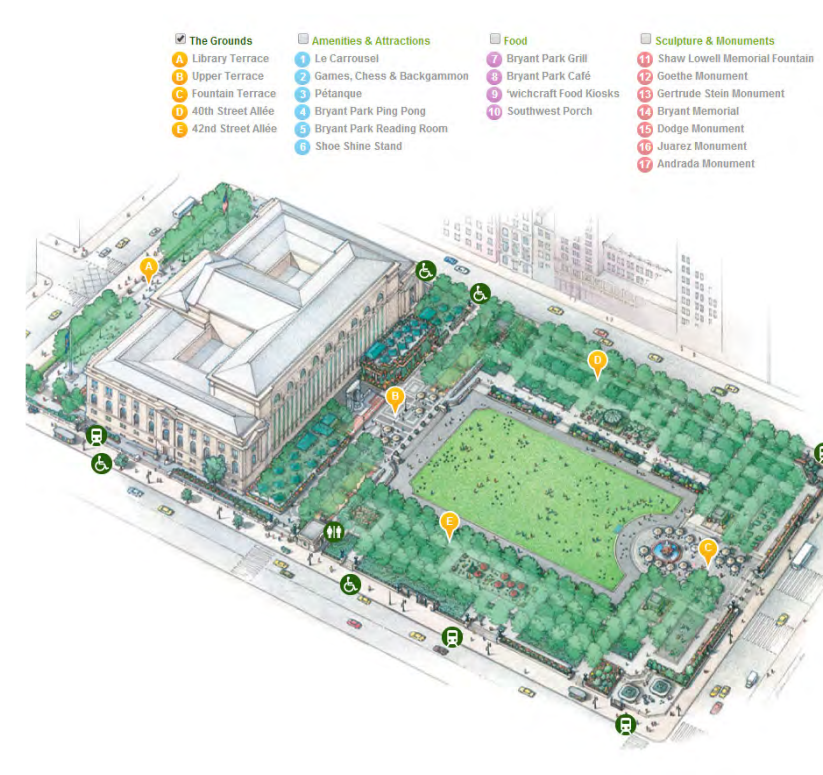
Park Lane Park - Dallas, Texas



Director Park - Portland, Oregon



Town Square, Southlake, Texas



Bryant Park - New York, New York



Main Street Garden - Dallas, Texas