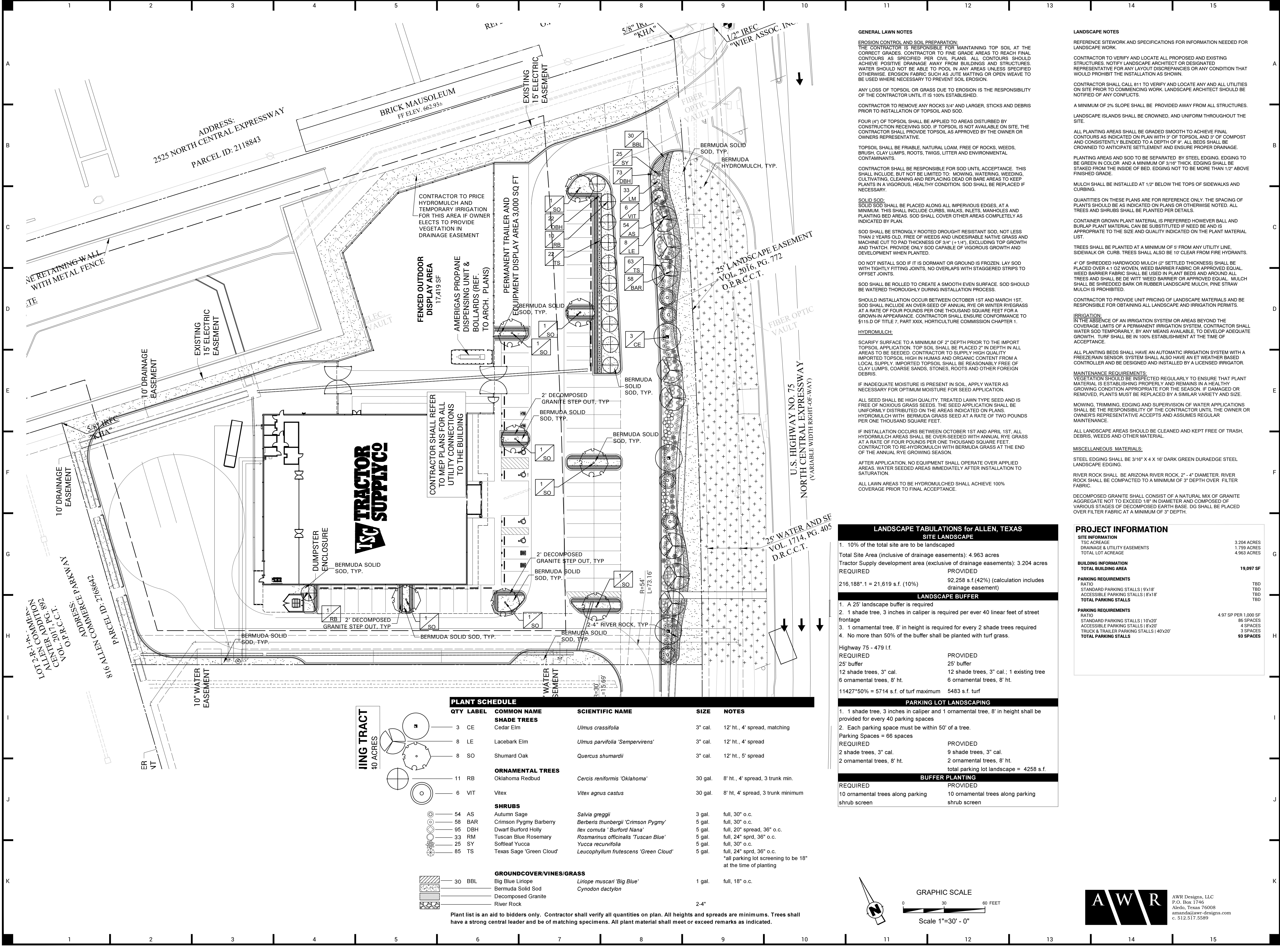


c:\dropbox\awr\jobs\2018\18134\_Landscape series.dwg - Plotted on 5/13/2019 9:15:52 PM to dwg to pdf.pc3 by Amandairchardson



Know what's below.  
Call before you dig.

REVISED: 12-31-18

REGISTERED LANDSCAPE ARCHITECT  
AMANDA W. RICHARDSON  
275A  
STATE OF TEXAS

TRACTOR SUPPLY COMPANY

Civil Engineering Inc.  
3214 N.W. AVIGNON WAY, SUITE 4  
BENTONVILLE, AR 72712  
479.464.8850 | OFFICE 479.464.9040 | FAX

LANDSCAPE PLAN

NEW COMMERCIAL DEVELOPMENT  
R.A. WILSON ENTERPRISES, LLC  
SOUTHBOUND FRONTAGE ROAD U.S. HWY 75  
ALLEN, COLLIN COUNTY, TEXAS

DRAWN BY: AWR

JOB NO: 18134\_L

ORIGINAL ISSUE DATE: 12/21/2018

DESCRIPTION: PERMITTING

SHEET NO: L1.01