



**May+Watkins Design**

**DESIGN DEVELOPMENT and  
FINAL DESIGN**

Watters Branch Park

June 18 2017

*Model: Restroom Wall. Red Hot Poker Sculpture*

## **Index**

Garden Sculptures 3-11

Benches 12-16

Facade Sculptures 17-18

Bike Racks 19-20

Budget + Moving Forward 21

## **Introduction**

The following scale models are based on plants that are part of the planned landscape design. We have abstracted the forms, and made them oversized. In some cases, we plan to use 'found objects' instead of traditional materials. Some of these objects will be related to sports.



### **Garden Sculpture: Pink Muhly Grass**

**Materials:** Schedule 40 pipe (diameters will vary), steel balls (various sizes), and steel plate.

**Size:** Approx. 9-ft H x 4-ft 8-in W x 4-ft D

**Coating:** Powder coated. Mild steel will be hot dipped galvanized before coating.

**Color:**

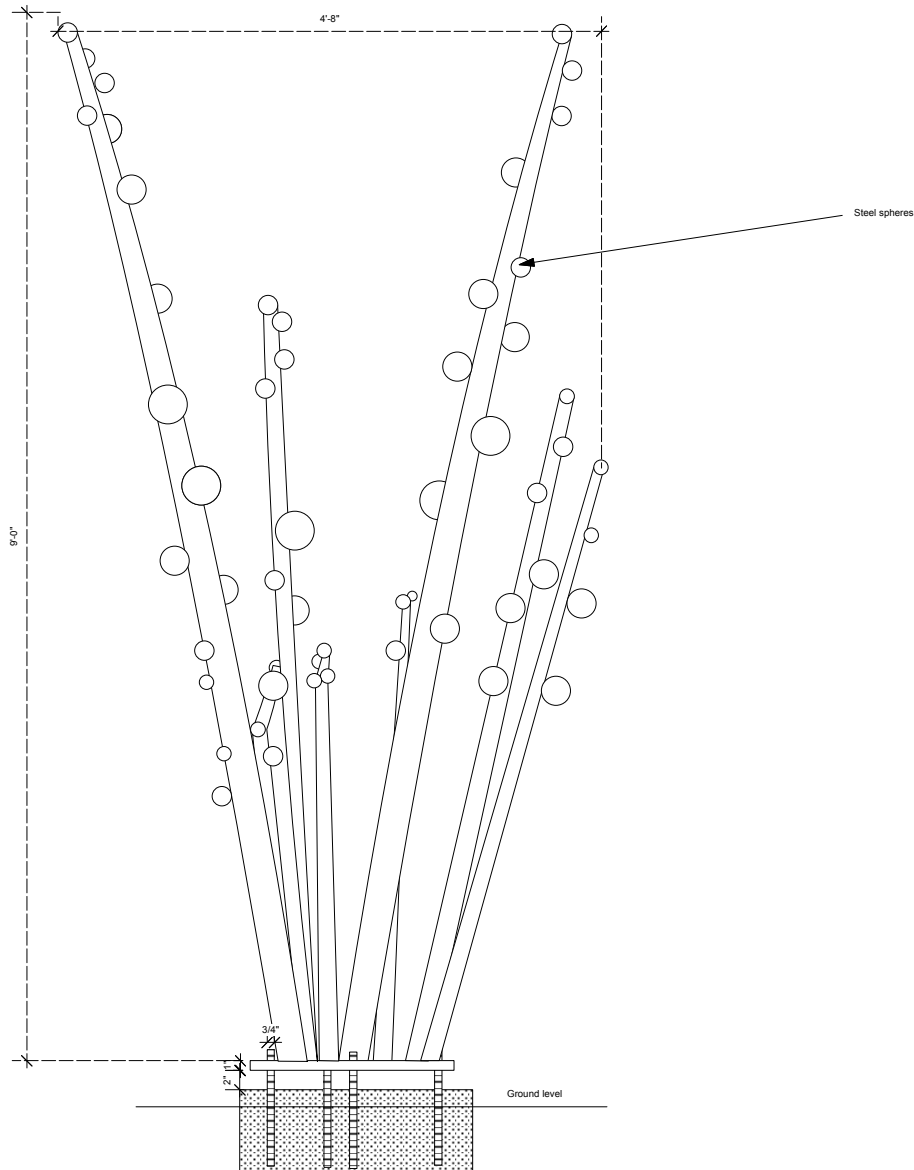
RAL 4003 heather violet

RAL 3015 light pink



*Pink Muhly Grass*

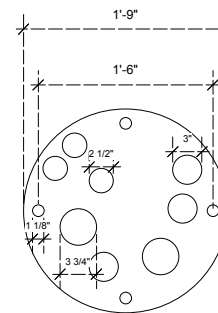
## Garden Sculpture: Pink Muhly Grass



### Notes:

- All pipes sch 40 black steel (to be hot dip galvanized)
- All pipes tapered from 3" max to 1" min
- To be fabricated as one piece
- Use hollow steel spheres or solid steel balls for 'pods'
- For final powder colors see document

### Base plate plan with cutouts and bolting pattern



### Base plate notes

- Use 1" mild steel
- Cutouts as noted
  - 2 @ 3.5"
  - 3 @ 3"
  - 3 @ 2.5"
  - 4 @ 1.15"
- concrete foundations by others

**May & Watkins Design, LLC**

26 N Franklin St Athens, NY 917 301 3063

**Watters Park, Allen TX**

**Pink Muhly grass plan, elev + dtls**

Scale 1:12 Oct16



### Garden Sculpture: Milkweed

**Materials:** Schedule 40 pipe (diameters will vary) and plate. Blossom assemblies will be constructed from various items including valve taps, threaded nuts, and other materials.

**Size:** Approximately 8-ft H x 2-ft diameter

**Coating:** Powder coated. Mild steel will be hot dipped galvanized before coating.

**Color:**

RAL 2012 salmon orange

RAL 1015 light ivory

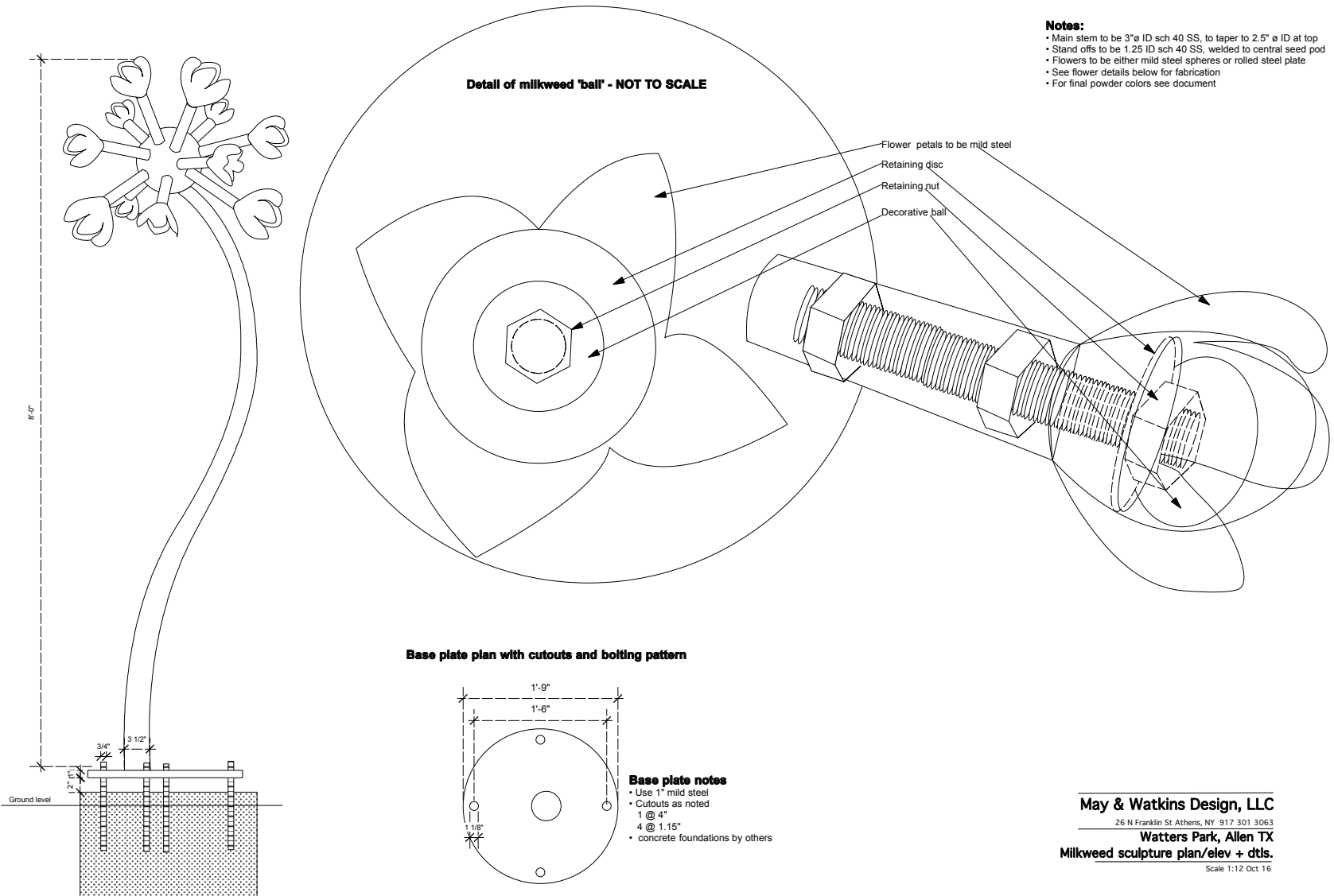
Custom yellow green



*Milkweed*



## Garden Sculpture: Milkweed



### **Garden Sculpture: Yellow Yucca**

**Materials:** Schedule 40 pipe (diameters will vary) and steel plate. Blossoms will be constructed from aluminum baseball bats.

**Size:** Approximately 6-ft H x 3-ft W x 2.5-ft D

**Coating:** Powder coated. Mild steel will be hot dipped galvanized before coating.

**Color:**

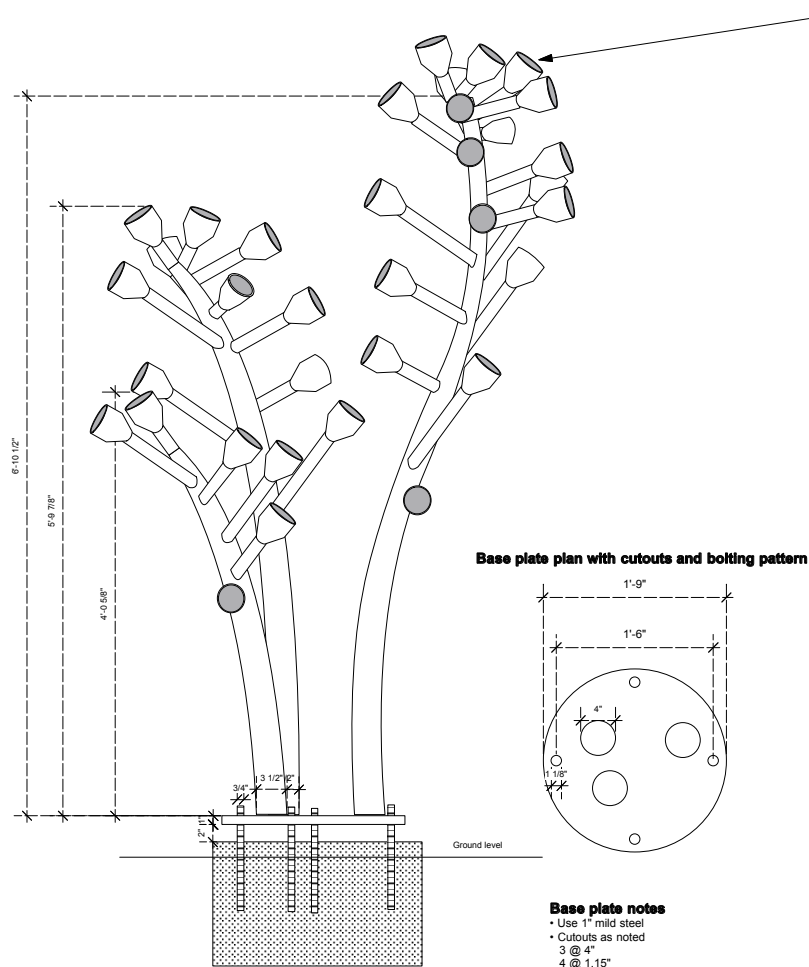
Custom yellow green

RAL 1004 golden yellow



*Yellow Flowered Yucca*

# Garden Sculpture: Yellow Yucca

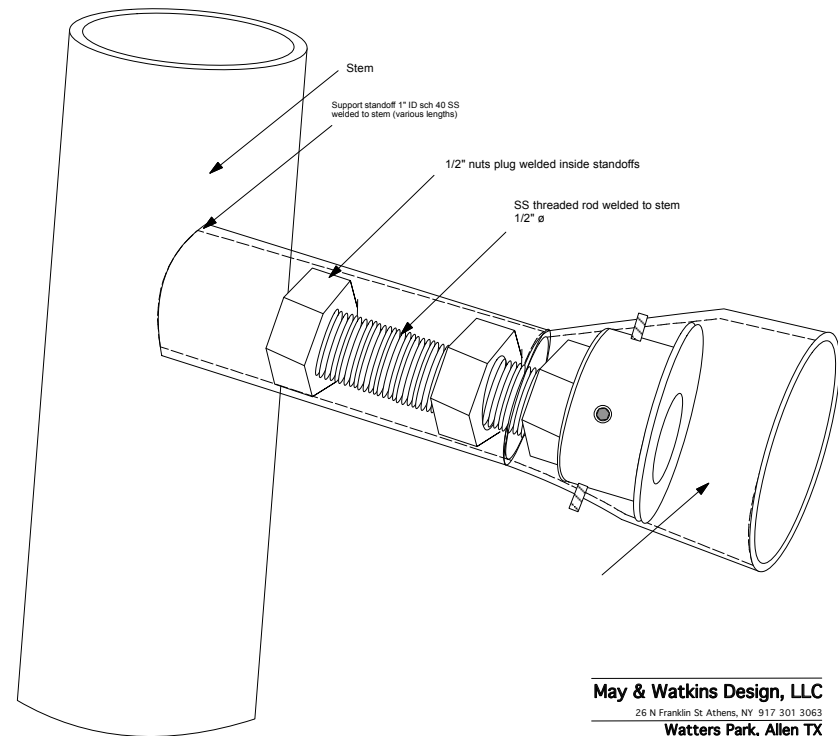


## Notes:

- Stems start @ 3" ø ID sch 40 SS steel, to taper to 2" ø ID at top
- Standoffs for bats to be 1.25" ø sch 40 SS welded to stems
- Threaded rods to be 1/2" SS, threaded to stand offs and bats
- Bats to be re-purposed softball bats, cut to different lengths
- For final powder colors see document

## Detail of bat attachments - NOT TO SCALE

- Bat head assembly with 2 nuts - secured with set screws
- threads on to SS threaded rod and is then locked in place
  - open or closed bat end TBD



May & Watkins Design, LLC

26 N Franklin St Athens, NY 917 301 3063

Watters Park, Allen TX

Yellow yucca sculpture plan/elevs dtls.

Scale 1:12 Oct 16



### Garden Sculpture: Red Hot Poker

**Materials:** Schedule 40 pipe (diameters will vary), balls, steel plate, ready-made tapered shafts.

**Size:** Approximately 9-ft H x 3-ft D

**Coating:** Powder coated. Mild steel will be hot dipped galvanized before coating.

**Color:**

RAL 2002 vermillion

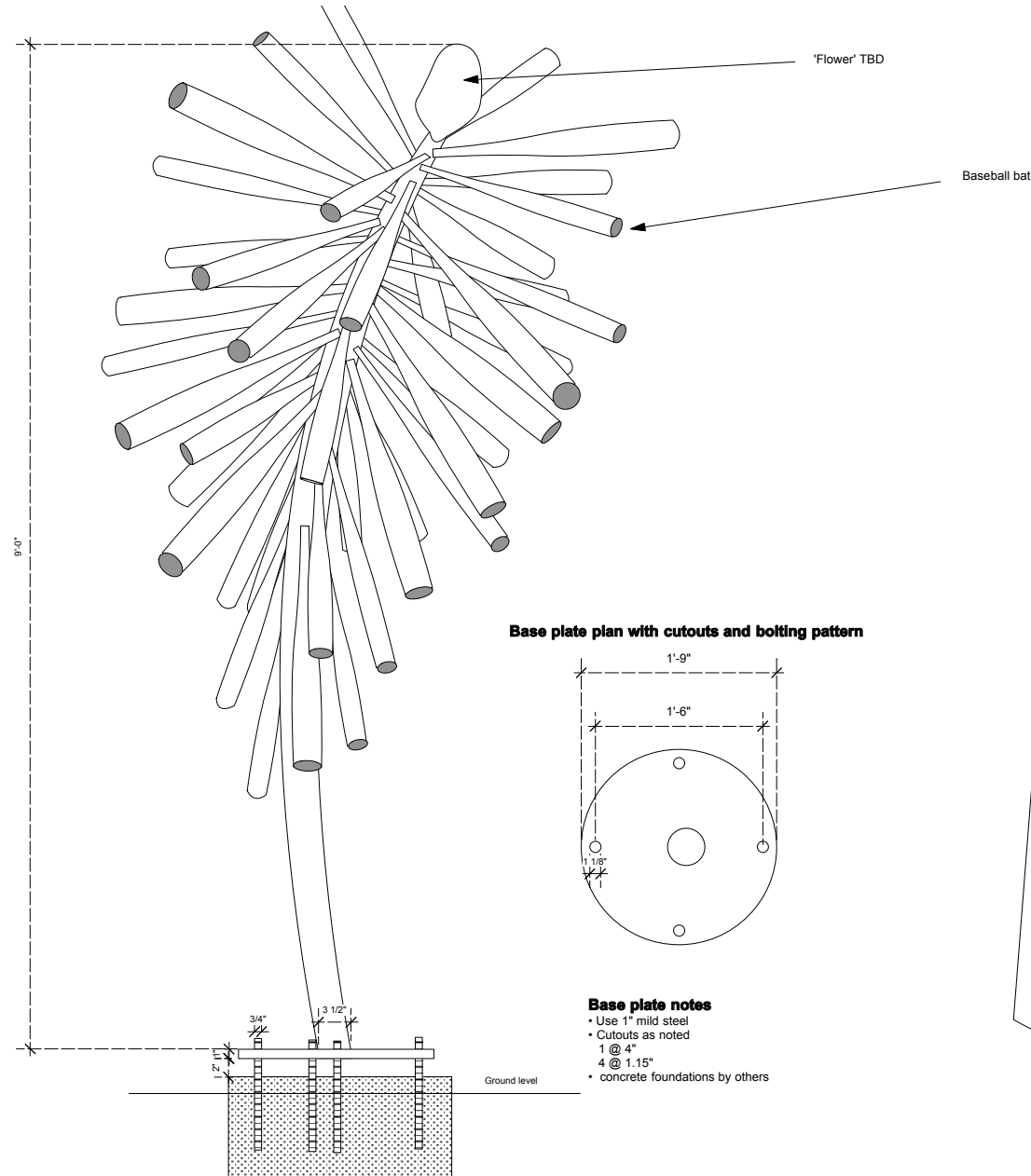
RAL 2012 salmon orange

RAL 1004 golden yellow



*Red Hot Poker*

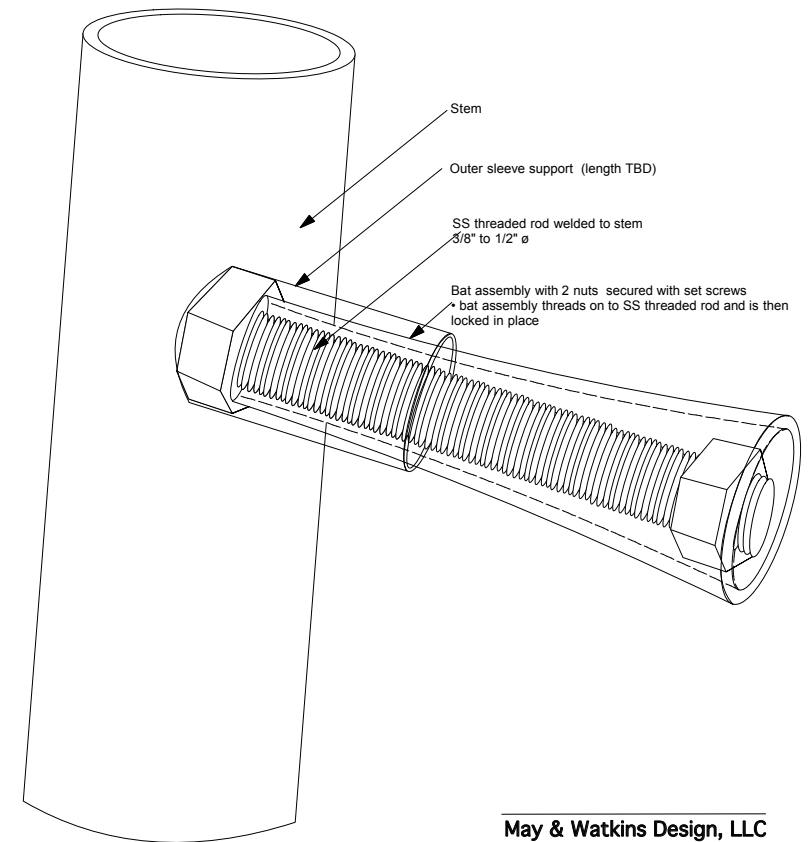
# Garden Sculpture: Red Hot Poker



## Notes:

- Main stem to be 3"ø ID sch 40 SS steel, to taper to 2" ø ID at top
- Threaded rods to be 3/8" and 1/2" SS, tacked to main stem (If necessary, SS support sleeves will be added as needed)
- Bats to be re-purposed hardball and softball bats, cut to different lengths
- For final powder colors see document

## Detail of bat attachments - NOT TO SCALE



**May & Watkins Design, LLC**

26 N Franklin St Athens, NY 917 301 3063

**Watters Park, Allen TX**

**Red Hot Poker sculpture plan, elev + dtls**

Scale 1:12 Oct16

### **Red Hot Poker Powder-Coat Test**

**Materials:**

Repurposed aluminum hard and soft ball bats.

**Coating:** Powder-coated with two color overlap blend.

**Color:**

Powdertech, our supplier for this process, used colors on hand to test blending techniques. We wanted to know if they could successfully transition color from yellow to red.

We are pleased with the outcome of this test and intend to use this process.



### Garden Benches: Tractor Seat Bench and Bouncy Benches

**Materials:** Stainless steel pipe, plate, perforated steel. Cast iron tractor seats and flat bar.

**Bench Size:** Approx. 5-ft H x 6-ft 4-in W x 1-ft 3-in D

**Bouncy Seat Size:** Approx. 2-ft 6-in H x 22-inch W x 22-inches D

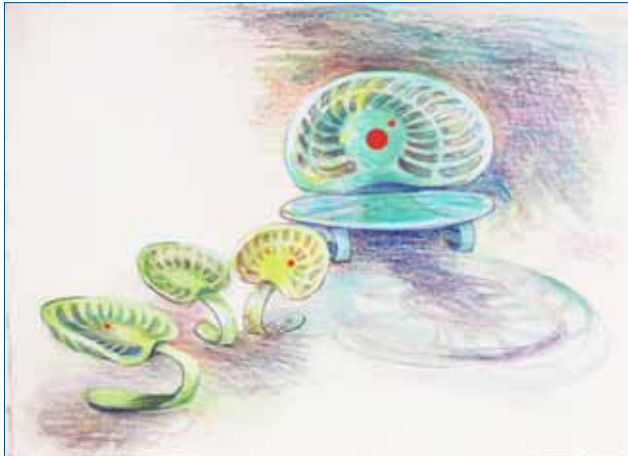
**Coating:** Powder coated.  
Mild steel and cast iron will be hot-dipped galvanized before coating

**Color:**  
Custom yellow green  
RAL 6024 traffic green  
RAL 6021 pale green  
RAL 2002 vermillion

*Right: Model of Tractor Bench/Bouncy Benches*

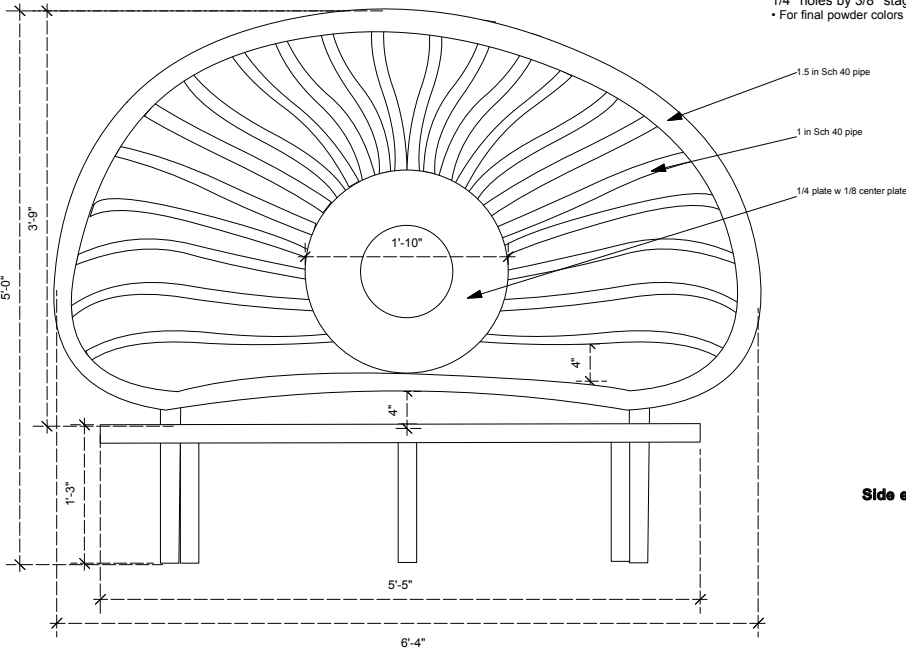
*Below left: Drawing*

*Below: Photo of tractor bench*

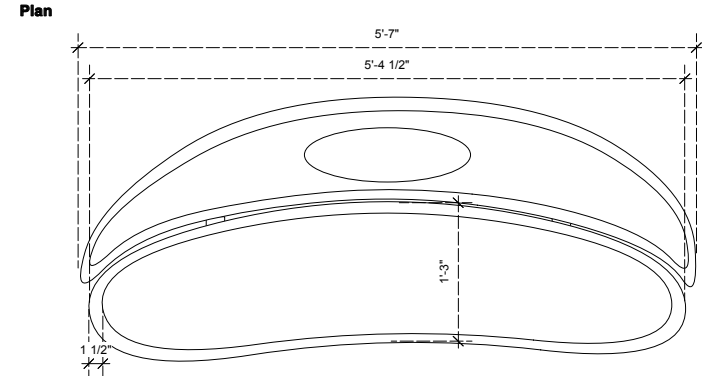


Garden Benches: Tractor Seat Bench and Bouncy Benches

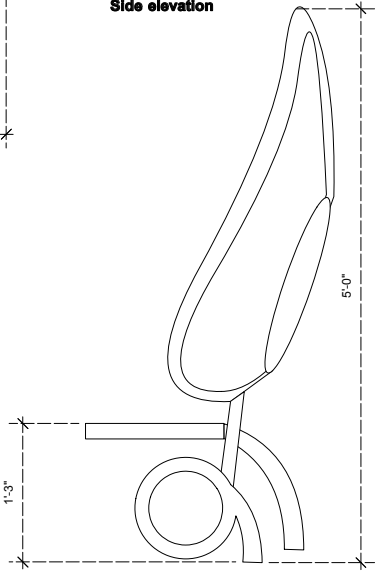
Tractor Bench Front elevation



- Notes:**
- All pipe to be Sch 40 stainless
  - All perforated steel to be 14 gauge Stainless
  - 1/4" holes by 3/8" staggered
  - For final powder colors see document

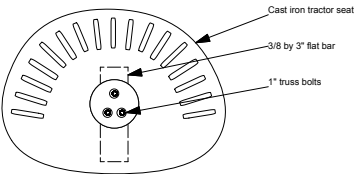


Side elevation

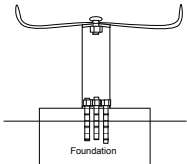


Bouncy Tractor seats by 3

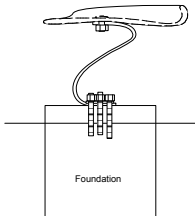
Plan



Front elevation



Front elevation



**May & Watkins Design, LLC**  
26 N Franklin St Athens, NY 917 301 3063  
**Watters Park, Allen TX**  
**Tractor Bench & Bouncy seats plan + elev. + dtls.**  
Scale 1:12 Oct.16



### Garden Benches: Red Hot Poker

**Materials:** Stainless steel pipe, plate, perforated steel.

**Size:** Approximately 5-ft H x 8-ft x 2-ft D

**Coating:** Powder coated.

**Color:**

RAL 6021 pale green

RAL 2002 vermillion

RAL 2012 salmon orange

*Right: Model of Red Hot Poker Bench*

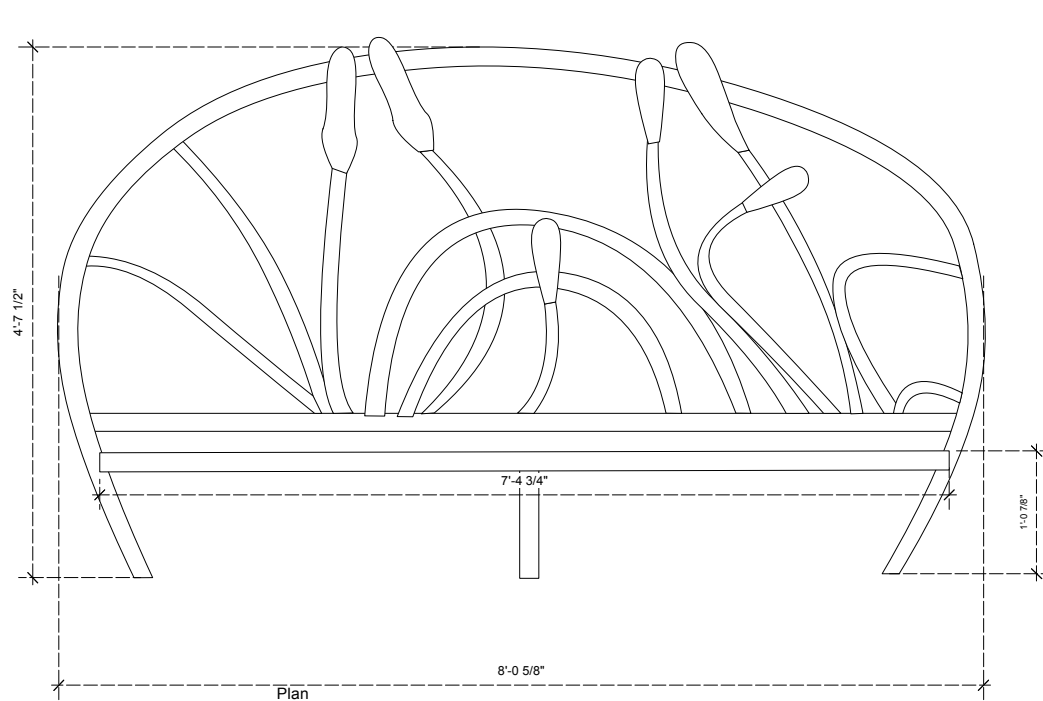
*Below: Model for Garden Sculpture*



*Red Hot Poker*

## Garden Benches: Red Hot Poker

Front elevation 'uncurled'

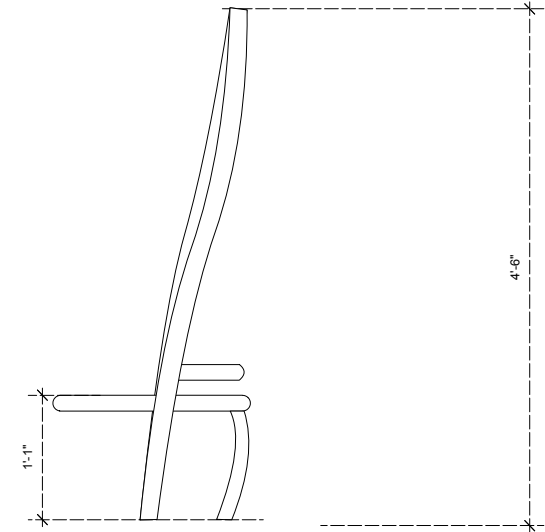


1.5 in Sch 40 pipe

1 in Sch 40 pipe

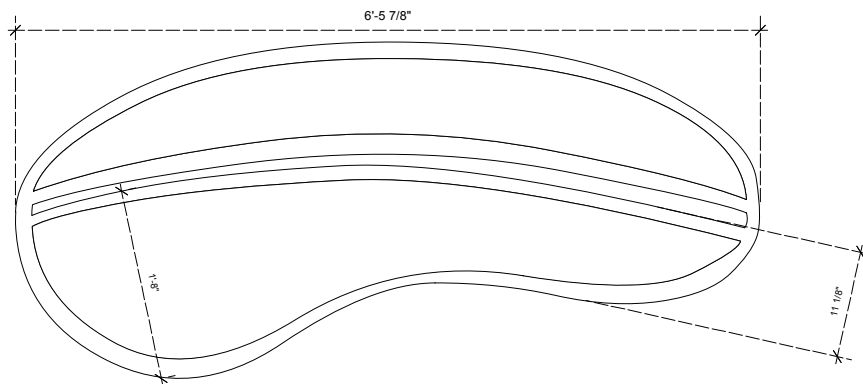
1/4 plate w 1/8 center plate

Side elevation



### Notes:

- All pipe to be Sch 40 stainless
- All perforated steel to be 14 gauge Stainless
- 1/4" holes by 3/8" staggered



**May & Watkins Design, LLC**

26 N Franklin St Athens, NY 917 301 3063

**Watters Park, Allen TX**

**Red Hot Poker bench plan + elevs v1**

Scale 1:12 Sept 16

### Facade Sculptures: Red Hot Poker

**Materials:** Schedule 40 pipe (diameters will vary), and plate. Blossoms will be constructed from aluminum baseball bats.

**Size:**

Wall: 12-ft H x 7.5-ft W x 2-ft D

Column: 14-ft H x 4-ft w x 2-ft D

**Coating:** Powder coated. Mild steel will be hot dipped galvanized before coating.

**Color:**

RAL 6021 pale green

RAL 2002 vermillion

RAL 2012 salmon orange

RAL 1004 golden yellow

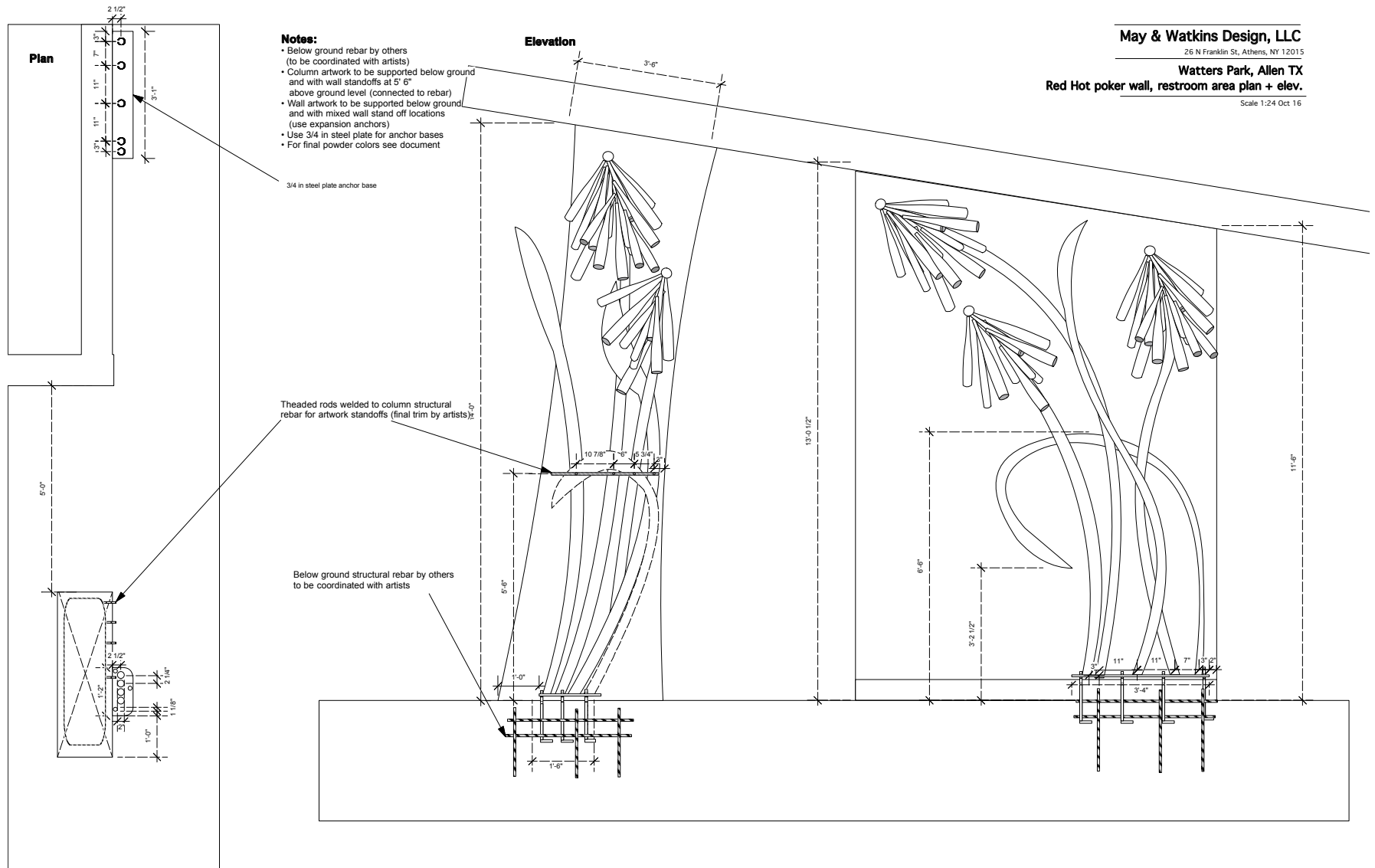
Custom yellow green



*Top right: Scale model of rest room wall and pillar*

*Bottom right: Looking up at the wall*

### Rest Room Facade Sculptures: Red Hot Poker



## Bike Racks: Red Hot Poker

**Materials:** Schedule 40 pipe (diameters vary)

**Size:**

Rack One: 5.5-ft H X 2-ft W X 2-ft D

Rack Two: 5-ft H X 3.5-ft W X 2.5-ft D

Rack Three: 2-ft H X 2-ft W X 1-ft D

Rack Four:: 5.5-ft H X 3-ft W X 3.5-ft D

**Coating:** Powder coated. Mild steel will be hot dipped galvanized before coating.

**Color for Racks 1, 2 and 4:**

RAL 6021 pale green

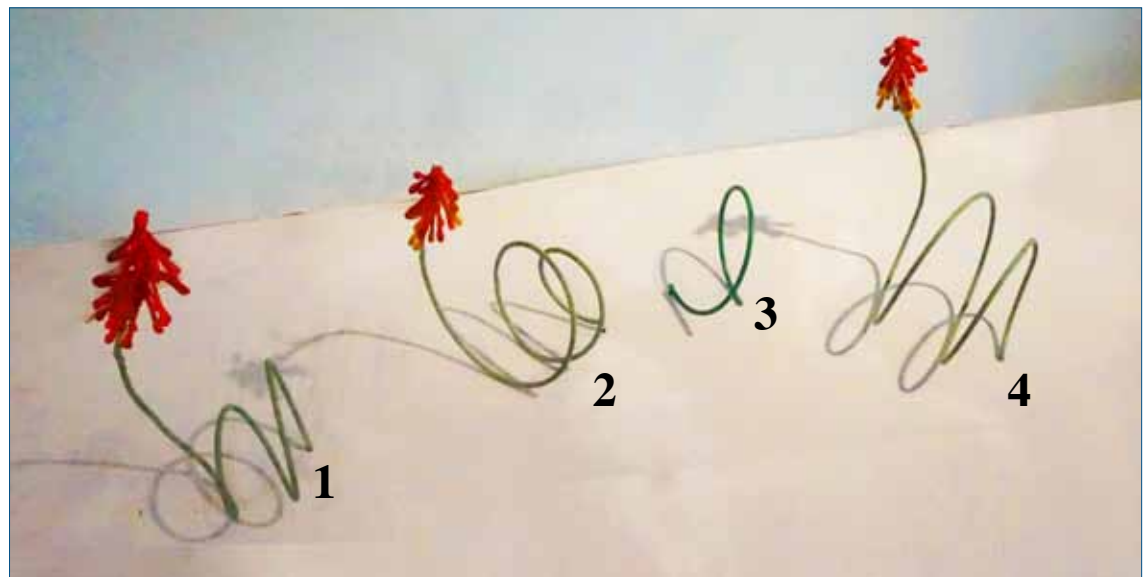
RAL 2002 vermillion

RAL 2012 salmon orange

RAL 1004 golden yellow

**Color for Rack 3:**

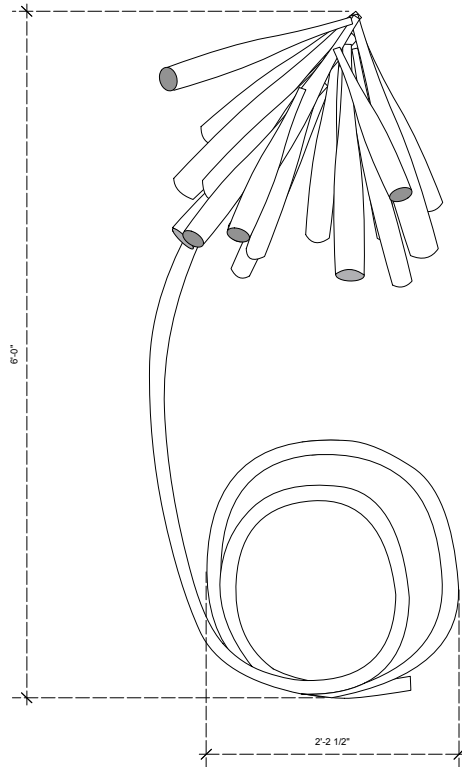
RAL 6024 traffic green





## Bike Racks: Red Hot Poker

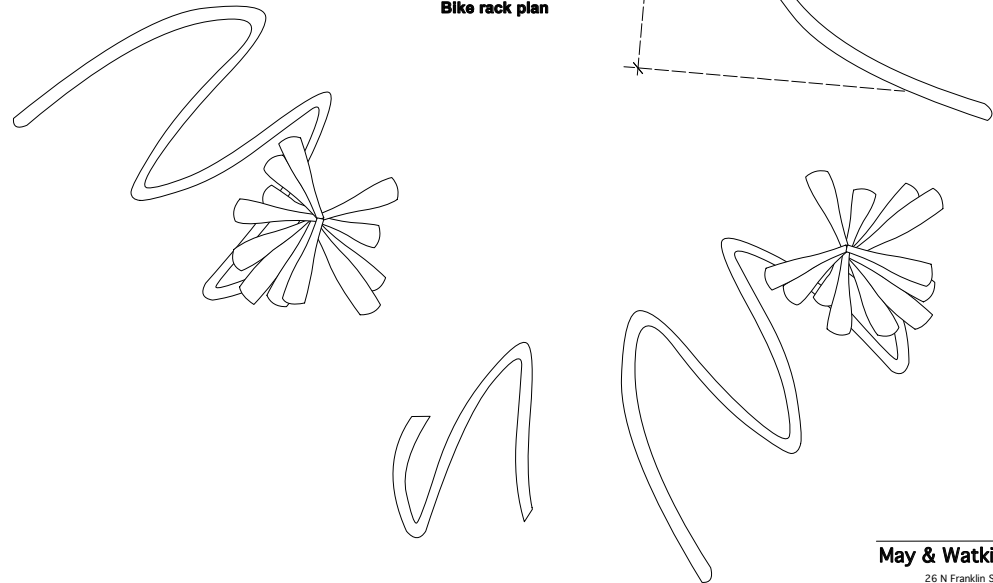
**Bike rack elevation**



**Notes:**

- All racks 1.5 " ID sched 40 SS pipe
- Final location of racks on site TBD
- Final positioning of racks TBD
- For bat attachment dtls. see Red Hot poker sculpture dwgs
- Bats to be re-purposed softball bats, cut to different lengths
- For final powder colors see document

**Bike rack plan**



**May & Watkins Design, LLC**

26 N Franklin St Athens, NY 917 301 3063

**Watters Park, Allen TX**

**Bike racks plan/elev + dtls.**

Scale 1:12 Oct 16

## ID Elements and Entry Signs

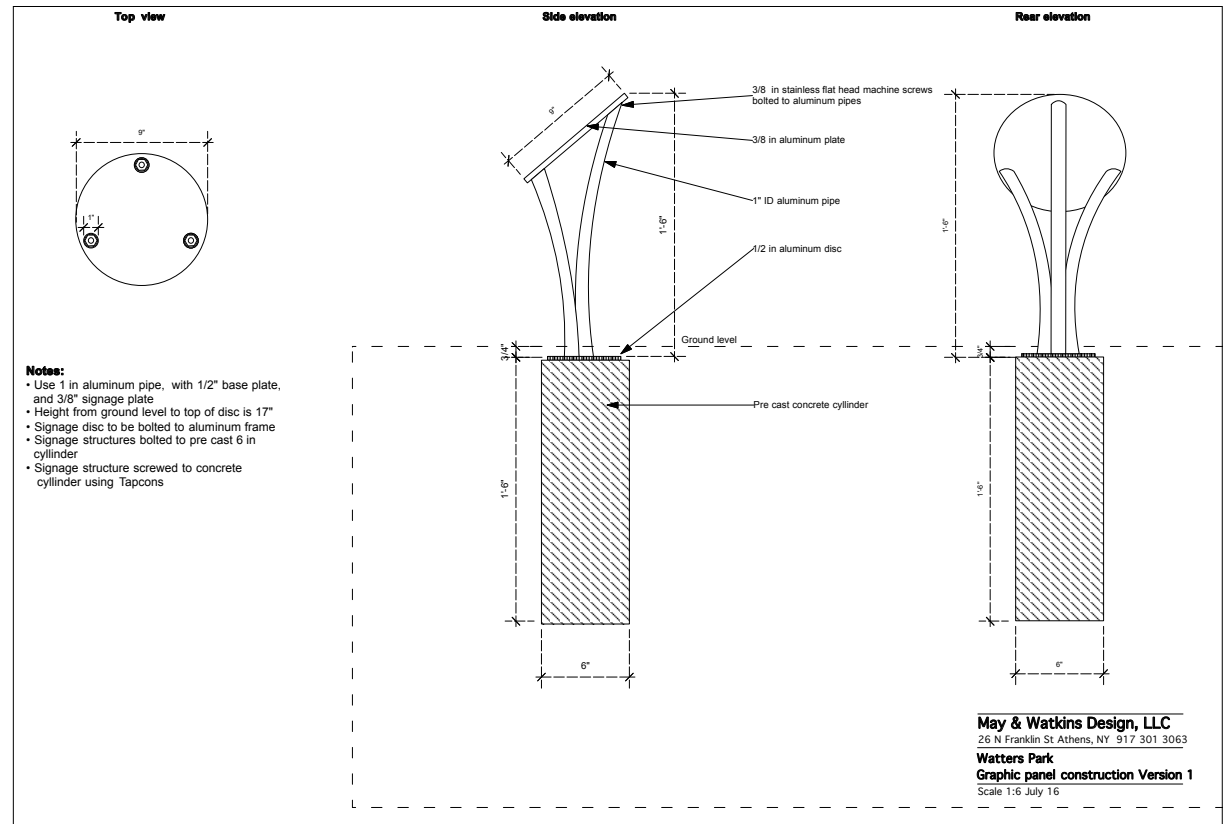
### Entry Signs

*below:* 2 Entry Signs

**Materials:** Schedule 40 pipe (diameters will vary), and plate. Blossoms will be constructed from aluminum baseball bats.

### ID Signs

*right:* 20 shaped stem bases and mounting plates for round signs 8-in x 8-in





*Model for Red Hot Poker Garden Sculpture.*

**Budget:**

Prices include materials, fabrication, shipping and installation

Garden Sculptures @ \$8,646 each

Total of 4 sculptures:

Pink Muhly Grass, Milkweed, Yellow Yucca, Red Hot Poker 34,584

Red Hot Poker Bench 7,645

Tractor Bench 9,000

3 Bouncy Benches @ \$800 each 2,400

Facade Sculptures (Red Hot Poker) 16,585

Sculptural Bike Racks (4 related units of varying complexity) 9,000

Stainless steel cost increase upcharge 3,200

Powder-coating cost increase upcharge 2,200

Engineer 2,000

Drawings will not be stamped, but we will engage our engineer to advise us

Airfare for Installation  
for 3 people 1,350

Additional Design Work (Bike Racks and 5 versions of Concept Design) 1,736

Sign Package: 20 ID Signs and 2 Entry Signs 33,043

**TOTAL 122,743**